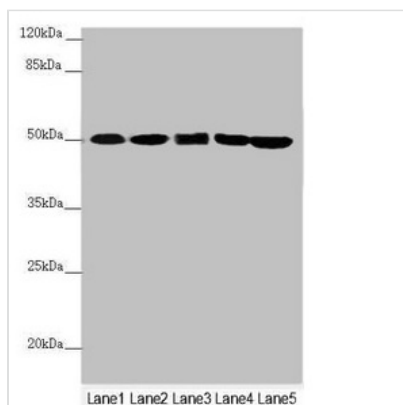




EEF1G Antibody

Product Code	CSB-PA007433ESR2HU
Storage	Upon receipt, store at -20°C or -80°C. Avoid repeated freeze.
Uniprot No.	P26641
Immunogen	Recombinant Human Elongation factor 1-gamma protein (168-437AA)
Raised In	Rabbit
Species Reactivity	Human, Mouse
Tested Applications	ELISA, WB, IHC; Recommended dilution: WB:1:1000-1:5000, IHC:1:20-1:200
Form	Liquid
Conjugate	Non-conjugated
Storage Buffer	PBS with 0.02% sodium azide, 50% glycerol, pH7.3.
Purification Method	Antigen Affinity Purified
Isotype	IgG
Clonality	Polyclonal
Alias	Elongation factor 1-gamma (EF-1-gamma) (eEF-1B gamma), EEF1G, EF1G
Immunogen Species	Homo sapiens (Human)
Research Area	Epigenetics and Nuclear Signaling
Target Names	EEF1G

Image



Western blot

All lanes: EEF1G antibody at 0.78µg/ml

Lane 1: Mouse gonadal tissue

Lane 2: PC-3 whole cell lysate

Lane 3: HepG2 whole cell lysate

Lane 4: HeLa whole cell lysate

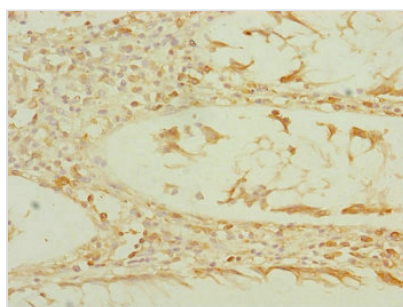
Lane 5: 293T whole cell lysate

Secondary

Goat polyclonal to rabbit IgG at 1/10000 dilution

Predicted band size: 51, 57 kDa

Observed band size: 51 kDa



Immunohistochemistry of paraffin-embedded

human colon cancer using CSB-

PA007433ESR2HU at dilution of 1:100



Immunohistochemistry of paraffin-embedded human gastric cancer using CSB-PA007433ESR2HU at dilution of 1:100

Usage

For Research Use Only. Not for use in diagnostic or therapeutic procedures.