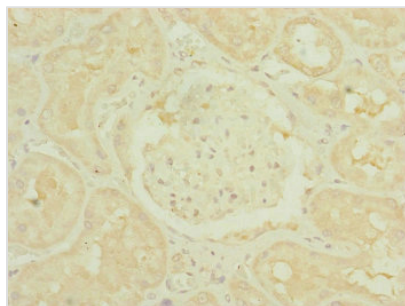




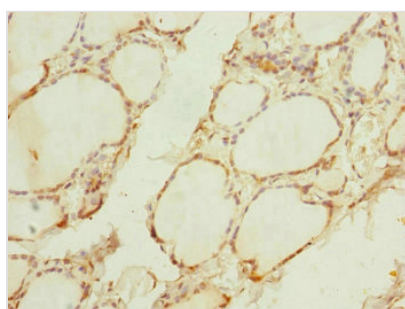
TIMM10B Antibody

Product Code	CSB-PA896532ESR1HU
Storage	Upon receipt, store at -20°C or -80°C. Avoid repeated freeze.
Uniprot No.	Q9Y5J6
Immunogen	Recombinant Human Mitochondrial import inner membrane translocase subunit Tim10 B protein (1-103AA)
Raised In	Rabbit
Species Reactivity	Human
Tested Applications	ELISA, IHC, IF; Recommended dilution: IHC:1:20-1:200, IF:1:50-1:200
Form	Liquid
Conjugate	Non-conjugated
Storage Buffer	PBS with 0.02% sodium azide, 50% glycerol, pH7.3.
Purification Method	Antigen Affinity Purified
Isotype	IgG
Clonality	Polyclonal
Alias	Mitochondrial import inner membrane translocase subunit Tim10 B (Fracture callus protein 1) (FxC1) (Mitochondrial import inner membrane translocase subunit Tim9 B) (TIMM10B) (Tim10b), TIMM10B, FXC1 TIM9B TIMM9B
Immunogen Species	Homo sapiens (Human)
Research Area	Others
Target Names	TIMM10B

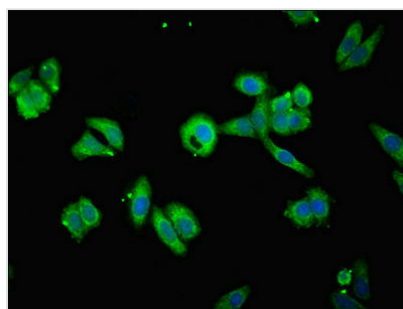
Image



Immunohistochemistry of paraffin-embedded human kidney tissue using CSB-PA896532ESR1HU at dilution of 1:100



Immunohistochemistry of paraffin-embedded human thyroid tissue using CSB-PA896532ESR1HU at dilution of 1:100



Immunofluorescent analysis of HepG2 cells using CSB-PA896532ESR1HU at dilution of 1:100 and Alexa Fluor 488-conjugated AffiniPure Goat Anti-Rabbit IgG(H+L)

Usage

For Research Use Only. Not for use in diagnostic or therapeutic procedures.