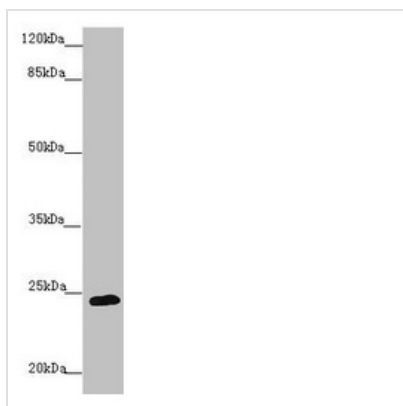




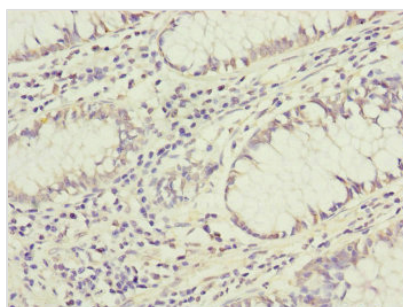
GRPEL1 Antibody

| | |
|----------------------------|---|
| Product Code | CSB-PA875707ESR2HU |
| Storage | Upon receipt, store at -20°C or -80°C. Avoid repeated freeze. |
| Uniprot No. | Q9HAV7 |
| Immunogen | Recombinant Human GrpE protein homolog 1, mitochondrial protein (1-217AA) |
| Raised In | Rabbit |
| Species Reactivity | Human |
| Tested Applications | ELISA, WB, IHC; Recommended dilution: WB:1:1000-1:5000, IHC:1:20-1:200 |
| Form | Liquid |
| Conjugate | Non-conjugated |
| Storage Buffer | PBS with 0.02% sodium azide, 50% glycerol, pH7.3. |
| Purification Method | Antigen Affinity Purified |
| Isotype | IgG |
| Clonality | Polyclonal |
| Alias | GrpE protein homolog 1, mitochondrial (HMGE) (Mt-GrpE#1), GRPEL1, GREPEL1 |
| Immunogen Species | Homo sapiens (Human) |
| Research Area | Signal Transduction |
| Target Names | GRPEL1 |

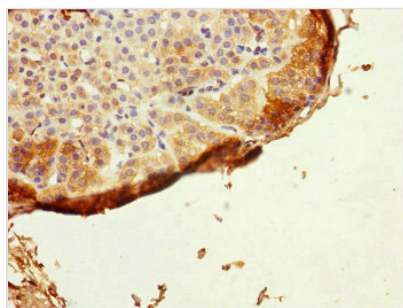
Image



Western blot
All lanes: GRPEL1 antibody at 1.37µg/ml + 293T whole cell lysate
Secondary
Goat polyclonal to rabbit IgG at 1/10000 dilution
Predicted band size: 24 kDa
Observed band size: 24 kDa



Immunohistochemistry of paraffin-embedded human colon cancer using CSB-PA875707ESR2HU at dilution of 1:100



Immunohistochemistry of paraffin-embedded human adrenal gland tissue using CSB-PA875707ESR2HU at dilution of 1:100