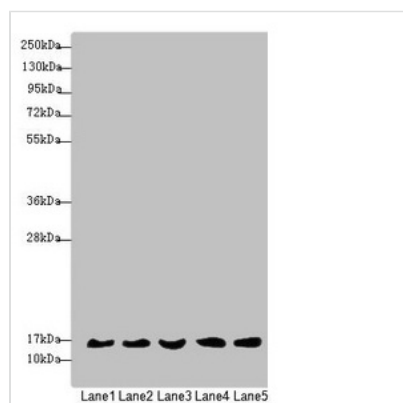




MRPS16 Antibody

| | |
|----------------------------|----------------------------------------------------------------------------------------------------------------------------------|
| Product Code | CSB-PA897105ESR1HU |
| Storage | Upon receipt, store at -20°C or -80°C. Avoid repeated freeze. |
| Uniprot No. | Q9Y3D3 |
| Immunogen | Recombinant Human 28S ribosomal protein S16, mitochondrial protein (1-137AA) |
| Raised In | Rabbit |
| Species Reactivity | Human, Mouse |
| Tested Applications | ELISA, WB, IHC; Recommended dilution: WB:1:1000-1:5000, IHC:1:20-1:200 |
| Form | Liquid |
| Conjugate | Non-conjugated |
| Storage Buffer | PBS with 0.02% sodium azide, 50% glycerol, pH7.3. |
| Purification Method | Antigen Affinity Purified |
| Isotype | IgG |
| Clonality | Polyclonal |
| Alias | 28S ribosomal protein S16, mitochondrial (MRP-S16) (S16mt) (Mitochondrial small ribosomal subunit protein bS16m), MRPS16, RPMS16 |
| Immunogen Species | Homo sapiens (Human) |
| Research Area | Epigenetics and Nuclear Signaling |
| Target Names | MRPS16 |

Image



Western blot

All lanes: MRPS16 antibody at 1.35µg/ml

Lane 1: Mouse liver tissue

Lane 2: 293T whole cell lysate

Lane 3: Jurkat whole cell lysate

Lane 4: Raji whole cell lysate

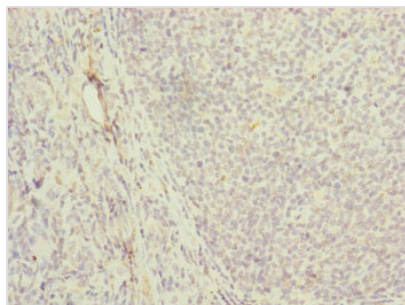
Lane 5: HepG2 whole cell lysate

Secondary

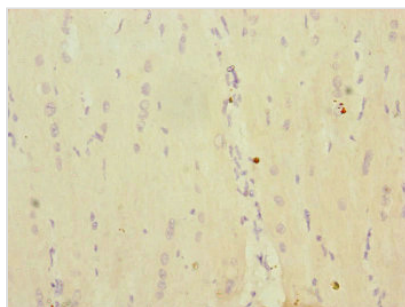
Goat polyclonal to rabbit IgG at 1/10000 dilution

Predicted band size: 16, 14 kDa

Observed band size: 16 kDa



Immunohistochemistry of paraffin-embedded human tonsil tissue using CSB-PA897105ESR1HU at dilution of 1:100



Immunohistochemistry of paraffin-embedded human heart tissue using CSB-PA897105ESR1HU at dilution of 1:100

Usage

For Research Use Only. Not for use in diagnostic or therapeutic procedures.