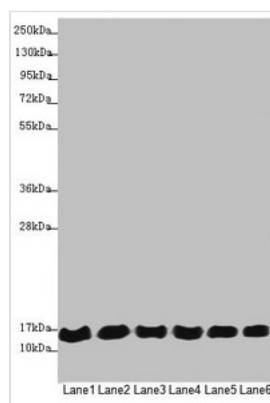




MRPS16 Antibody

Product Code	CSB-PA897105ESR2HU
Storage	Upon receipt, store at -20°C or -80°C. Avoid repeated freeze.
Uniprot No.	Q9Y3D3
Immunogen	Recombinant Human 28S ribosomal protein S16, mitochondrial protein (1-137AA)
Raised In	Rabbit
Species Reactivity	Human
Tested Applications	ELISA, WB, IHC; Recommended dilution: WB:1:1000-1:5000, IHC:1:20-1:200
Form	Liquid
Conjugate	Non-conjugated
Storage Buffer	PBS with 0.02% sodium azide, 50% glycerol, pH7.3.
Purification Method	Antigen Affinity Purified
Isotype	IgG
Clonality	Polyclonal
Alias	28S ribosomal protein S16, mitochondrial (MRP-S16) (S16mt) (Mitochondrial small ribosomal subunit protein bS16m), MRPS16, RPMS16
Immunogen Species	Homo sapiens (Human)
Research Area	Epigenetics and Nuclear Signaling
Target Names	MRPS16

Image



Western blot

All lanes: MRPS16 antibody at 1.12µg/ml

Lane 1: 293T whole cell lysate

Lane 2: Jurkat whole cell lysate

Lane 3: HeLa whole cell lysate

Lane 4: MCF-7 whole cell lysate

Lane 5: Raji whole cell lysate

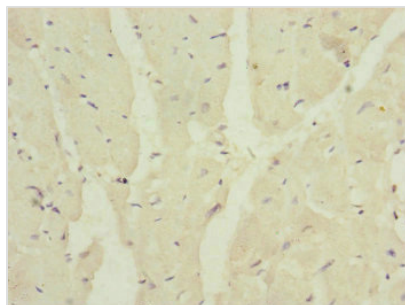
Lane 6: HepG2 whole cell lysate

Secondary

Goat polyclonal to rabbit IgG at 1/10000 dilution

Predicted band size: 16, 14 kDa

Observed band size: 16 kDa



Immunohistochemistry of paraffin-embedded human heart tissue using CSB-PA897105ESR2HU at dilution of 1:100

Usage

For Research Use Only. Not for use in diagnostic or therapeutic procedures.