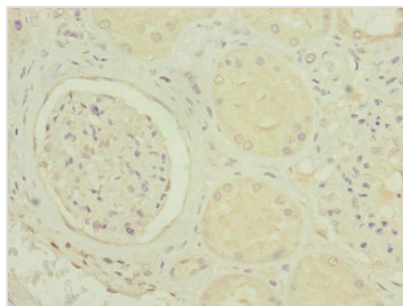




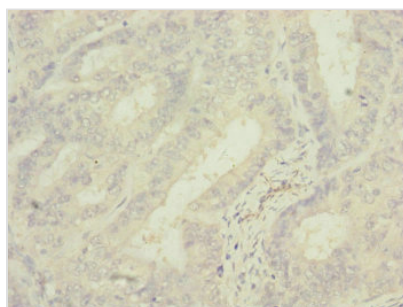
MRPS6 Antibody

Product Code	CSB-PA014937ESR1HU
Storage	Upon receipt, store at -20°C or -80°C. Avoid repeated freeze.
Uniprot No.	P82932
Immunogen	Recombinant Human 28S ribosomal protein S6, mitochondrial protein (1-125AA)
Raised In	Rabbit
Species Reactivity	Human
Tested Applications	ELISA, IHC; Recommended dilution: IHC:1:20-1:200
Form	Liquid
Conjugate	Non-conjugated
Storage Buffer	PBS with 0.02% sodium azide, 50% glycerol, pH7.3.
Purification Method	Antigen Affinity Purified
Isotype	IgG
Clonality	Polyclonal
Alias	28S ribosomal protein S6, mitochondrial (MRP-S6) (S6mt) (Mitochondrial small ribosomal subunit protein bS6m), MRPS6, C21orf101 RPMS6
Immunogen Species	Homo sapiens (Human)
Research Area	Epigenetics and Nuclear Signaling
Target Names	MRPS6

Image



Immunohistochemistry of paraffin-embedded human kidney tissue using CSB-PA014937ESR1HU at dilution of 1:100



Immunohistochemistry of paraffin-embedded human endometrial cancer using CSB-PA014937ESR1HU at dilution of 1:100

Usage

For Research Use Only. Not for use in diagnostic or therapeutic procedures.