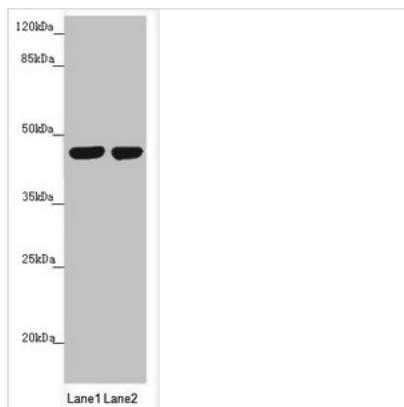




MTERF2 Antibody

| | |
|----------------------------|---|
| Product Code | CSB-PA669874ESR1HU |
| Storage | Upon receipt, store at -20°C or -80°C. Avoid repeated freeze. |
| Uniprot No. | Q49AM1 |
| Immunogen | Recombinant Human Transcription termination factor 2, mitochondrial protein (1-250AA) |
| Raised In | Rabbit |
| Species Reactivity | Human |
| Tested Applications | ELISA, WB, IHC; Recommended dilution: WB:1:1000-1:5000, IHC:1:20-1:200 |
| Form | Liquid |
| Conjugate | Non-conjugated |
| Storage Buffer | PBS with 0.02% sodium azide, 50% glycerol, pH7.3. |
| Purification Method | Antigen Affinity Purified |
| Isotype | IgG |
| Clonality | Polyclonal |
| Alias | Transcription termination factor 2, mitochondrial (Mitochondrial transcription termination factor 2) (mTERF2) (Mitochondrial transcription termination factor-like protein) (mTERF-like) (mTERFL) (mTERF domain-containing protein 3, mitochondrial), MTERF2, MTERFD3 |
| Immunogen Species | Homo sapiens (Human) |
| Research Area | Epigenetics and Nuclear Signaling |
| Target Names | MTERF2 |

Image



Western blot

All lanes: MTERFD3 antibody at 1.66 µg/ml

Lane 1: U251 whole cell lysate

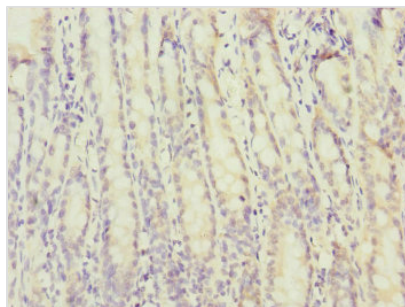
Lane 2: HepG2 whole cell lysate

Secondary

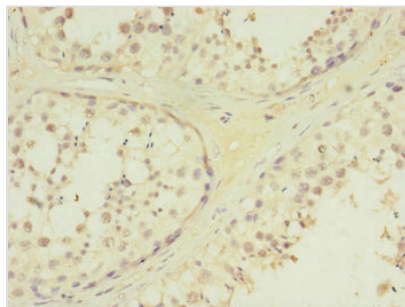
Goat polyclonal to rabbit IgG at 1/10000 dilution

Predicted band size: 44 kDa

Observed band size: 44 kDa



Immunohistochemistry of paraffin-embedded human small intestine tissue using CSB-PA669874ESR1HU at dilution of 1:100



Immunohistochemistry of paraffin-embedded human testis tissue using CSB-PA669874ESR1HU at dilution of 1:100

Usage

For Research Use Only. Not for use in diagnostic or therapeutic procedures.