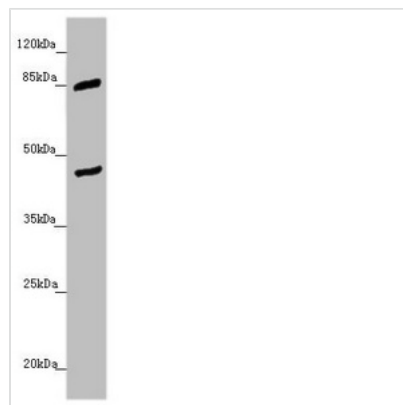




MTERF2 Antibody

Product Code	CSB-PA669874ESR2HU
Storage	Upon receipt, store at -20°C or -80°C. Avoid repeated freeze.
Uniprot No.	Q49AM1
Immunogen	Recombinant Human Transcription termination factor 2, mitochondrial protein (1-250AA)
Raised In	Rabbit
Species Reactivity	Human
Tested Applications	ELISA, WB, IHC; Recommended dilution: WB:1:1000-1:5000, IHC:1:20-1:200
Form	Liquid
Conjugate	Non-conjugated
Storage Buffer	PBS with 0.02% sodium azide, 50% glycerol, pH7.3.
Purification Method	Antigen Affinity Purified
Isotype	IgG
Clonality	Polyclonal
Alias	Transcription termination factor 2, mitochondrial (Mitochondrial transcription termination factor 2) (mTERF2) (Mitochondrial transcription termination factor-like protein) (mTERF-like) (mTERFL) (mTERF domain-containing protein 3, mitochondrial), MTERF2, MTERFD3
Immunogen Species	Homo sapiens (Human)
Research Area	Epigenetics and Nuclear Signaling
Target Names	MTERF2

Image



Western blot

All lanes: MTERFD3 antibody at 1.45 µg/ml +

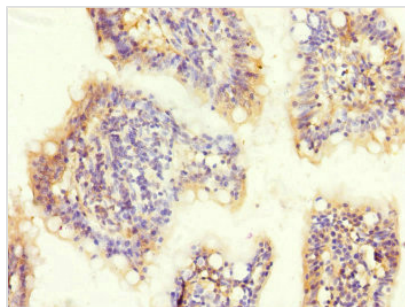
U251 whole cell lysate

Secondary

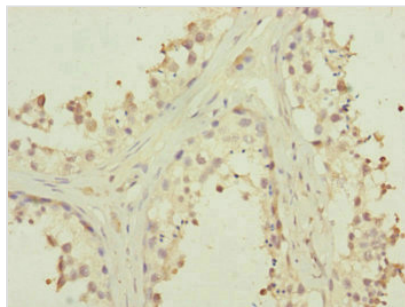
Goat polyclonal to rabbit IgG at 1/10000 dilution

Predicted band size: 44 kDa

Observed band size: 44, 85 kDa



Immunohistochemistry of paraffin-embedded human small intestine tissue using CSB-PA669874ESR2HU at dilution of 1:100



Immunohistochemistry of paraffin-embedded human testis tissue using CSB-PA669874ESR2HU at dilution of 1:100

Usage

For Research Use Only. Not for use in diagnostic or therapeutic procedures.