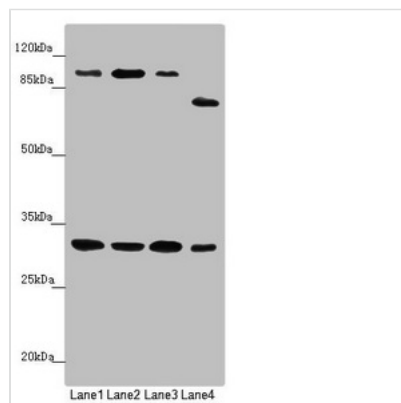




MTIF3 Antibody

Product Code	CSB-PA862000ESR2HU
Storage	Upon receipt, store at -20°C or -80°C. Avoid repeated freeze.
Uniprot No.	Q9H2K0
Immunogen	Recombinant Human Translation initiation factor IF-3, mitochondrial protein (1-278AA)
Raised In	Rabbit
Species Reactivity	Human, Mouse, Rat
Tested Applications	ELISA, WB, IHC; Recommended dilution: WB:1:1000-1:5000, IHC:1:20-1:200
Form	Liquid
Conjugate	Non-conjugated
Storage Buffer	PBS with 0.02% sodium azide, 50% glycerol, pH7.3.
Purification Method	Antigen Affinity Purified
Isotype	IgG
Clonality	Polyclonal
Alias	Translation initiation factor IF-3, mitochondrial (IF-3(Mt)) (IF-3Mt) (IF3(mt)) (IF3mt), MTIF3
Immunogen Species	Homo sapiens (Human)
Research Area	Others
Target Names	MTIF3

Image



Western blot

All lanes: MTIF3 antibody at 1.15 µg/ml

Lane 1: Mouse small intestine tissue

Lane 2: Rat heart tissue

Lane 3: Mouse liver tissue

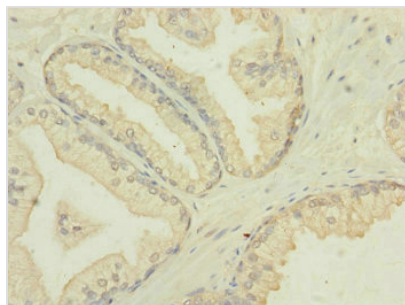
Lane 4: HeLa whole cell lysate

Secondary

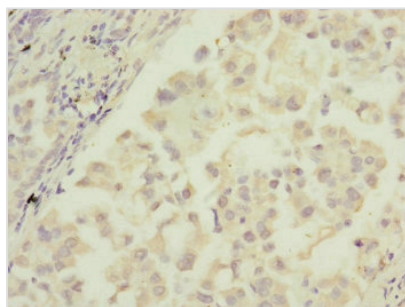
Goat polyclonal to rabbit IgG at 1/10000 dilution

Predicted band size: 32 kDa

Observed band size: 32, 100, 75 kDa



Immunohistochemistry of paraffin-embedded human prostate cancer using CSB-PA862000ESR2HU at dilution of 1:100



Immunohistochemistry of paraffin-embedded human lung cancer using CSB-PA862000ESR2HU at dilution of 1:100

Usage

For Research Use Only. Not for use in diagnostic or therapeutic procedures.