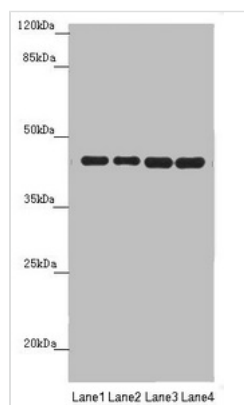




PDHA2 Antibody

Product Code	CSB-PA017716ESR1HU
Storage	Upon receipt, store at -20°C or -80°C. Avoid repeated freeze.
Uniprot No.	P29803
Immunogen	Recombinant Human Pyruvate dehydrogenase E1 component subunit alpha, testis-specific form, mitochondrial protein (119-388AA)
Raised In	Rabbit
Species Reactivity	Human, Mouse
Tested Applications	ELISA, WB, IHC; Recommended dilution: WB:1:1000-1:5000, IHC:1:20-1:200
Form	Liquid
Conjugate	Non-conjugated
Storage Buffer	PBS with 0.02% sodium azide, 50% glycerol, pH7.3.
Purification Method	Antigen Affinity Purified
Isotype	IgG
Clonality	Polyclonal
Alias	Pyruvate dehydrogenase E1 component subunit alpha, testis-specific form, mitochondrial (EC 1.2.4.1) (PDHE1-A type II), PDHA2, PDHAL
Immunogen Species	Homo sapiens (Human)
Research Area	Signal Transduction
Target Names	PDHA2

Image



Western blot

All lanes: PDHA2 antibody at 1.62 µg/ml

Lane 1: Mouse gonadal tissue

Lane 2: 293T whole cell lysate

Lane 3: A549 whole cell lysate

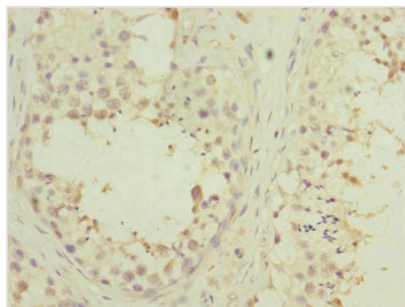
Lane 4: HepG2 whole cell lysate

Secondary

Goat polyclonal to rabbit IgG at 1/10000 dilution

Predicted band size: 43 kDa

Observed band size: 43 kDa



Immunohistochemistry of paraffin-embedded human testis tissue using CSB-PA017716ESR1HU at dilution of 1:100