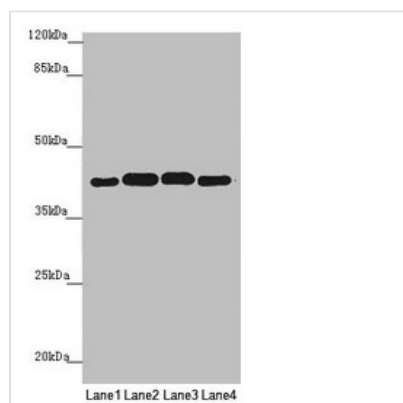




PDHA2 Antibody

| | |
|----------------------------|---|
| Product Code | CSB-PA017716ESR2HU |
| Storage | Upon receipt, store at -20°C or -80°C. Avoid repeated freeze. |
| Uniprot No. | P29803 |
| Immunogen | Recombinant Human Pyruvate dehydrogenase E1 component subunit alpha, testis-specific form, mitochondrial protein (119-388AA) |
| Raised In | Rabbit |
| Species Reactivity | Human, Mouse |
| Tested Applications | ELISA, WB, IHC; Recommended dilution: WB:1:1000-1:5000, IHC:1:20-1:200 |
| Form | Liquid |
| Conjugate | Non-conjugated |
| Storage Buffer | PBS with 0.02% sodium azide, 50% glycerol, pH7.3. |
| Purification Method | Antigen Affinity Purified |
| Isotype | IgG |
| Clonality | Polyclonal |
| Alias | Pyruvate dehydrogenase E1 component subunit alpha, testis-specific form, mitochondrial (EC 1.2.4.1) (PDHE1-A type II), PDHA2, PDHAL |
| Immunogen Species | Homo sapiens (Human) |
| Research Area | Signal Transduction |
| Target Names | PDHA2 |

Image



Western blot

All lanes: PDHA2 antibody at 1.9µg/ml

Lane 1: Mouse gonadal tissue

Lane 2: 293T whole cell lysate

Lane 3: A549 whole cell lysate

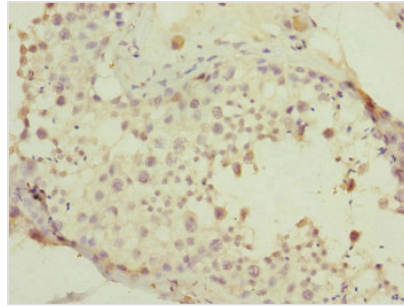
Lane 4: HepG2 whole cell lysate

Secondary

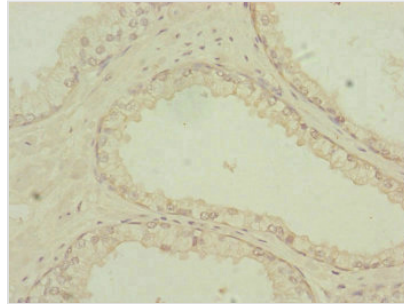
Goat polyclonal to rabbit IgG at 1/10000 dilution

Predicted band size: 43 kDa

Observed band size: 43 kDa



Immunohistochemistry of paraffin-embedded human testis tissue using CSB-PA017716ESR2HU at dilution of 1:100



Immunohistochemistry of paraffin-embedded human prostate cancer using CSB-PA017716ESR2HU at dilution of 1:100

Usage

For Research Use Only. Not for use in diagnostic or therapeutic procedures.