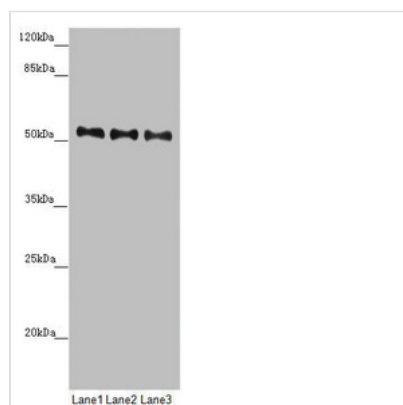




PMPCB Antibody

Product Code	CSB-PA018243ESR2HU
Storage	Upon receipt, store at -20°C or -80°C. Avoid repeated freeze.
Uniprot No.	O75439
Immunogen	Recombinant Human Mitochondrial-processing peptidase subunit beta protein (110-380AA)
Raised In	Rabbit
Species Reactivity	Human, Mouse
Tested Applications	ELISA, WB, IHC; Recommended dilution: WB:1:1000-1:5000, IHC:1:20-1:200
Form	Liquid
Conjugate	Non-conjugated
Storage Buffer	PBS with 0.02% sodium azide, 50% glycerol, pH7.3.
Purification Method	Antigen Affinity Purified
Isotype	IgG
Clonality	Polyclonal
Alias	Mitochondrial-processing peptidase subunit beta (EC 3.4.24.64) (Beta-MPP) (P-52), PMPCB, MPPB
Immunogen Species	Homo sapiens (Human)
Research Area	Tags & Cell Markers
Target Names	PMPCB

Image



Western blot

All lanes: PMPCB antibody at 0.69 µg/ml

Lane 1: Mouse heart tissue

Lane 2: Mouse kidney tissue

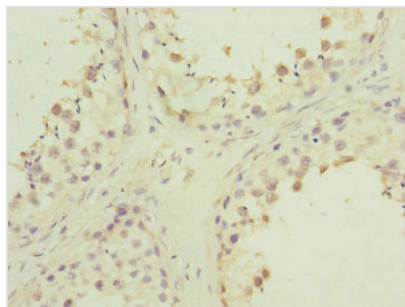
Lane 3: Mouse liver tissue

Secondary

Goat polyclonal to rabbit IgG at 1/10000 dilution

Predicted band size: 54 kDa

Observed band size: 54 kDa



Immunohistochemistry of paraffin-embedded human testis tissue using CSB-PA018243ESR2HU at dilution of 1:100