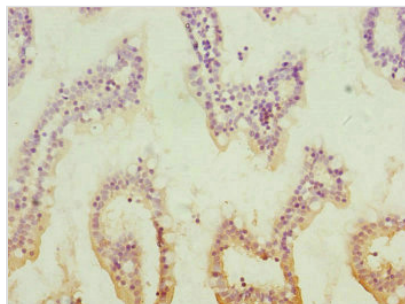




QRSL1 Antibody

| | |
|----------------------------|--|
| Product Code | CSB-PA887948ESR1HU |
| Storage | Upon receipt, store at -20°C or -80°C. Avoid repeated freeze. |
| Uniprot No. | Q9H0R6 |
| Immunogen | Recombinant Human Glutamyl-tRNA(Gln) amidotransferase subunit A, mitochondrial protein (289-528AA) |
| Raised In | Rabbit |
| Species Reactivity | Human |
| Tested Applications | ELISA, IHC; Recommended dilution: IHC:1:20-1:200 |
| Form | Liquid |
| Conjugate | Non-conjugated |
| Storage Buffer | PBS with 0.02% sodium azide, 50% glycerol, pH7.3. |
| Purification Method | Antigen Affinity Purified |
| Isotype | IgG |
| Clonality | Polyclonal |
| Alias | Glutamyl-tRNA(Gln) amidotransferase subunit A, mitochondrial (Glu-AdT subunit A) (EC 6.3.5.7) (Glutamyl-tRNA synthase-like protein 1), QRSL1 |
| Immunogen Species | Homo sapiens (Human) |
| Research Area | Epigenetics and Nuclear Signaling |
| Target Names | QRSL1 |

Image



Immunohistochemistry of paraffin-embedded human small intestine tissue using CSB-PA887948ESR1HU at dilution of 1:100

Usage

For Research Use Only. Not for use in diagnostic or therapeutic procedures.