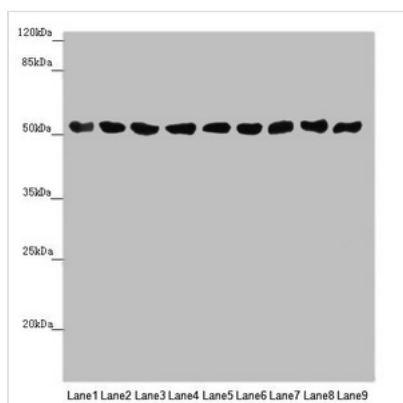




SAMM50 Antibody

Product Code	CSB-PA896898ESR2HU
Storage	Upon receipt, store at -20°C or -80°C. Avoid repeated freeze.
Uniprot No.	Q9Y512
Immunogen	Recombinant Human Sorting and assembly machinery component 50 homolog protein (1-220AA)
Raised In	Rabbit
Species Reactivity	Human, Mouse
Tested Applications	ELISA, WB, IHC; Recommended dilution: WB:1:1000-1:5000, IHC:1:20-1:200
Form	Liquid
Conjugate	Non-conjugated
Storage Buffer	PBS with 0.02% sodium azide, 50% glycerol, pH7.3.
Purification Method	Antigen Affinity Purified
Isotype	IgG
Clonality	Polyclonal
Alias	Sorting and assembly machinery component 50 homolog (Transformation-related gene 3 protein) (TRG-3), SAMM50, SAM50
Immunogen Species	Homo sapiens (Human)
Research Area	Signal Transduction
Target Names	SAMM50

Image



Western blot

All lanes: SAMM50 antibody at 0.98µg/ml

Lane 1: Mouse gonadal tissue

Lane 2: A375 whole cell lysate

Lane 3: A431 whole cell lysate

Lane 4: 293T whole cell lysate

Lane 5: HeLa whole cell lysate

Lane 6: A549 whole cell lysate

Lane 7: HepG2 whole cell lysate

Lane 8: U251 whole cell lysate

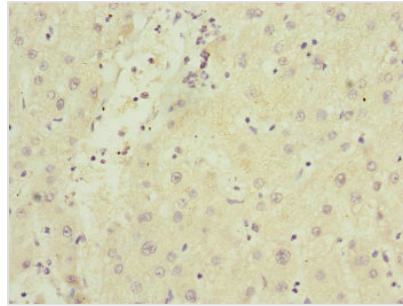
Lane 9: LO2 whole cell lysate

Secondary

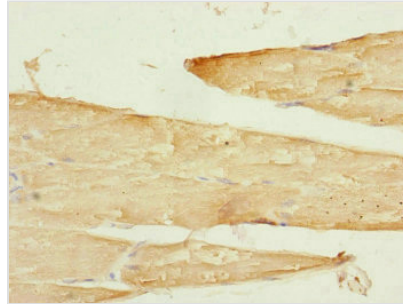
Goat polyclonal to rabbit IgG at 1/10000 dilution

Predicted band size: 52 kDa

Observed band size: 52 kDa



Immunohistochemistry of paraffin-embedded human liver cancer using CSB-PA896898ESR2HU at dilution of 1:100



Immunohistochemistry of paraffin-embedded human skeletal muscle tissue using CSB-PA896898ESR2HU at dilution of 1:100

Usage

For Research Use Only. Not for use in diagnostic or therapeutic procedures.