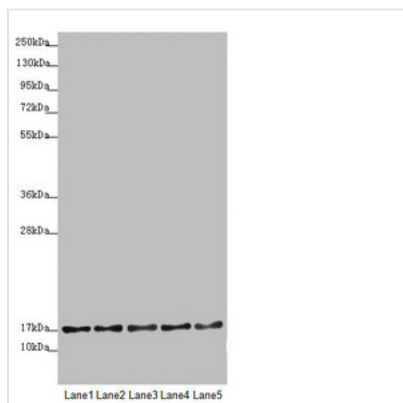




TIMM17B Antibody

Product Code	CSB-PA023551ESR2HU
Storage	Upon receipt, store at -20°C or -80°C. Avoid repeated freeze.
Uniprot No.	O60830
Immunogen	Recombinant Human Mitochondrial import inner membrane translocase subunit Tim17-B protein (1-172AA)
Raised In	Rabbit
Species Reactivity	Human
Tested Applications	ELISA, WB, IHC; Recommended dilution: WB:1:1000-1:5000, IHC:1:20-1:200
Form	Liquid
Conjugate	Non-conjugated
Storage Buffer	PBS with 0.02% sodium azide, 50% glycerol, pH7.3.
Purification Method	Antigen Affinity Purified
Isotype	IgG
Clonality	Polyclonal
Alias	Mitochondrial import inner membrane translocase subunit Tim17-B, TIMM17B, TIM17B
Immunogen Species	Homo sapiens (Human)
Research Area	Signal Transduction
Target Names	TIMM17B

Image



Western blot

All lanes: TIMM17B antibody at 1.75 µg/ml

Lane 1: U251 whole cell lysate

Lane 2: Jurkat whole cell lysate

Lane 3: HepG2 whole cell lysate

Lane 4: HL60 whole cell lysate

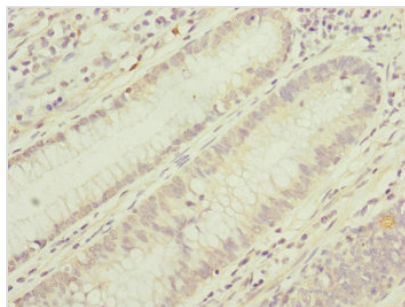
Lane 5: A431 whole cell lysate

Secondary

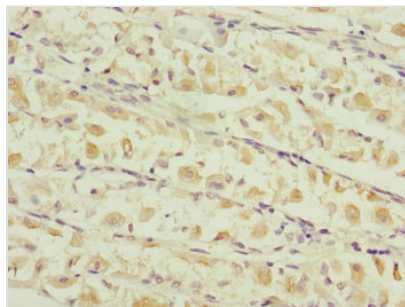
Goat polyclonal to rabbit IgG at 1/10000 dilution

Predicted band size: 19, 24 kDa

Observed band size: 19 kDa



Immunohistochemistry of paraffin-embedded human colon cancer using CSB-PA023551ESR2HU at dilution of 1:100



Immunohistochemistry of paraffin-embedded human gastric cancer using CSB-PA023551ESR2HU at dilution of 1:100

Usage

For Research Use Only. Not for use in diagnostic or therapeutic procedures.