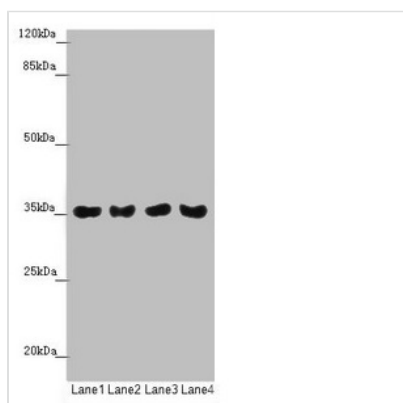




TOMM34 Antibody

Product Code	CSB-PA623014DSR2HU
Storage	Upon receipt, store at -20°C or -80°C. Avoid repeated freeze.
Uniprot No.	Q15785
Immunogen	Recombinant Human Mitochondrial import receptor subunit TOM34 protein (1-309AA)
Raised In	Rabbit
Species Reactivity	Human, Mouse
Tested Applications	ELISA, WB, IHC; Recommended dilution: WB:1:1000-1:5000, IHC:1:20-1:200
Form	Liquid
Conjugate	Non-conjugated
Storage Buffer	PBS with 0.02% sodium azide, 50% glycerol, pH7.3.
Purification Method	Antigen Affinity Purified
Isotype	IgG
Clonality	Polyclonal
Alias	Mitochondrial import receptor subunit TOM34 (hTom34) (Translocase of outer membrane 34 kDa subunit), TOMM34, URCC3
Immunogen Species	Homo sapiens (Human)
Research Area	Signal Transduction
Target Names	TOMM34

Image



Western blot

All lanes: TOMM34 antibody at 1.42µg/ml

Lane 1: Mouse gonadal tissue

Lane 2: A549 whole cell lysate

Lane 3: PC-3 whole cell lysate

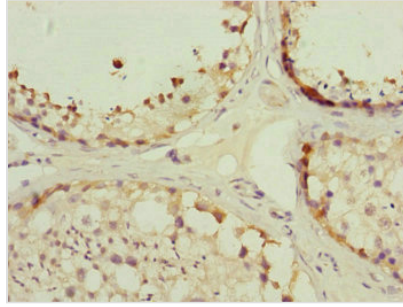
Lane 4: A375 whole cell lysate

Secondary

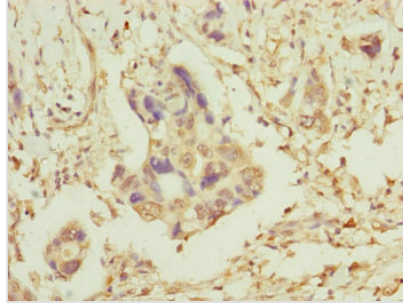
Goat polyclonal to rabbit IgG at 1/10000 dilution

Predicted band size: 35 kDa

Observed band size: 35 kDa



Immunohistochemistry of paraffin-embedded human testis tissue using CSB-PA623014DSR2HU at dilution of 1:100



Immunohistochemistry of paraffin-embedded human pancreatic cancer using CSB-PA623014DSR2HU at dilution of 1:100

Usage

For Research Use Only. Not for use in diagnostic or therapeutic procedures.