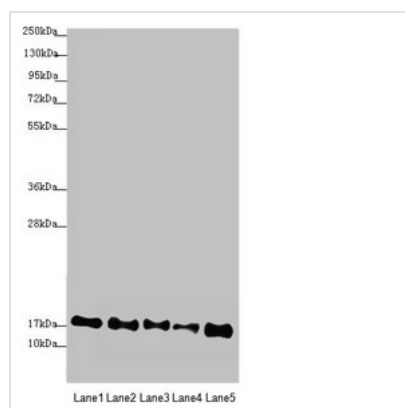




# ATP5F1D Antibody

<b>Product Code</b>	CSB-PA002355ESR1HU
<b>Storage</b>	Upon receipt, store at -20°C or -80°C. Avoid repeated freeze.
<b>Uniprot No.</b>	P30049
<b>Immunogen</b>	Recombinant Human ATP synthase subunit delta, mitochondrial protein (1-168AA)
<b>Raised In</b>	Rabbit
<b>Species Reactivity</b>	Human, Mouse
<b>Tested Applications</b>	ELISA, WB; Recommended dilution: WB:1:1000-1:5000
<b>Form</b>	Liquid
<b>Conjugate</b>	Non-conjugated
<b>Storage Buffer</b>	PBS with 0.02% sodium azide, 50% glycerol, pH7.3.
<b>Purification Method</b>	Antigen Affinity Purified
<b>Isotype</b>	IgG
<b>Clonality</b>	Polyclonal
<b>Alias</b>	ATP synthase subunit delta, mitochondrial (F-ATPase delta subunit), ATP5D
<b>Immunogen Species</b>	Homo sapiens (Human)
<b>Research Area</b>	Tags & Cell Markers
<b>Target Names</b>	ATP5D

## Image



### Western blot

All lanes: ATP5F1D antibody at 2.44μg/ml

Lane 1: Mouse heart tissue

Lane 2: Raji whole cell lysate

Lane 3: NIH/3T3 whole cell lysate

Lane 4: A549 whole cell lysate

Lane 5: HepG2 whole cell lysate

Secondary

Goat polyclonal to rabbit IgG at 1/10000 dilution

Predicted band size: 18 kDa

Observed band size: 18 kDa