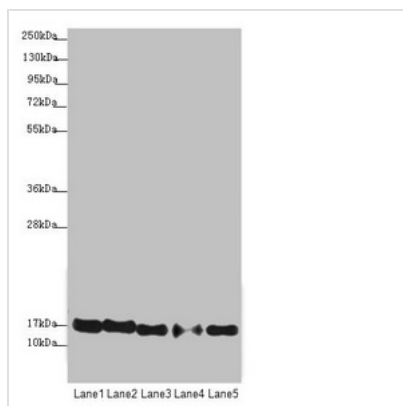




ATP5F1D Antibody

Product Code	CSB-PA002355ESR2HU
Storage	Upon receipt, store at -20°C or -80°C. Avoid repeated freeze.
Uniprot No.	P30049
Immunogen	Recombinant Human ATP synthase subunit delta, mitochondrial protein (1-168AA)
Raised In	Rabbit
Species Reactivity	Human, Mouse
Tested Applications	ELISA, WB, IHC; Recommended dilution: WB:1:1000-1:5000, IHC:1:20-1:200
Form	Liquid
Conjugate	Non-conjugated
Storage Buffer	PBS with 0.02% sodium azide, 50% glycerol, pH7.3.
Purification Method	Antigen Affinity Purified
Isotype	IgG
Clonality	Polyclonal
Alias	ATP synthase subunit delta, mitochondrial (F-ATPase delta subunit), ATP5D
Immunogen Species	Homo sapiens (Human)
Research Area	Tags & Cell Markers
Target Names	ATP5D

Image



Western blot

All lanes: ATP5F1D antibody at 1.94µg/ml

Lane 1: Raji whole cell lysate

Lane 2: NIH/3T3 whole cell lysate

Lane 3: A549 whole cell lysate

Lane 4: MDA-MB-231 whole cell lysate

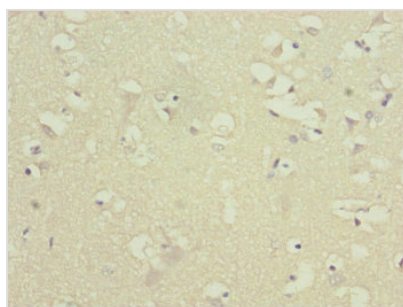
Lane 5: HepG2 whole cell lysate

Secondary

Goat polyclonal to rabbit IgG at 1/10000 dilution

Predicted band size: 18 kDa

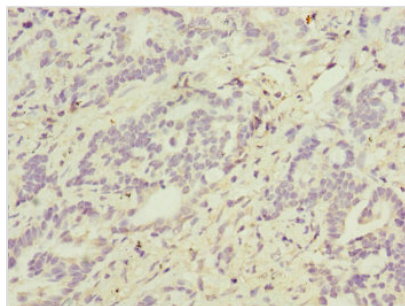
Observed band size: 18 kDa



Immunohistochemistry of paraffin-embedded

human brain tissue using CSB-

PA002355ESR2HU at dilution of 1:100



Immunohistochemistry of paraffin-embedded human lung cancer using CSB-PA002355ESR2HU at dilution of 1:100

Usage

For Research Use Only. Not for use in diagnostic or therapeutic procedures.