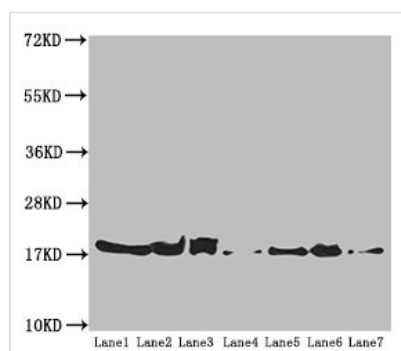




# ATP5H Antibody

<b>Product Code</b>	CSB-PA002366ESR2HU
<b>Storage</b>	Upon receipt, store at -20°C or -80°C. Avoid repeated freeze.
<b>Uniprot No.</b>	O75947
<b>Immunogen</b>	Recombinant Human ATP synthase subunit d, mitochondrial protein (1-161AA)
<b>Raised In</b>	Rabbit
<b>Species Reactivity</b>	Human, Mouse
<b>Tested Applications</b>	ELISA, WB, IHC; Recommended dilution: WB:1:1000-1:5000, IHC:1:20-1:200
<b>Form</b>	Liquid
<b>Conjugate</b>	Non-conjugated
<b>Storage Buffer</b>	PBS with 0.02% sodium azide, 50% glycerol, pH7.3.
<b>Purification Method</b>	Antigen Affinity Purified
<b>Isotype</b>	IgG
<b>Clonality</b>	Polyclonal
<b>Alias</b>	ATP synthase subunit d, mitochondrial (ATPase subunit d), ATP5H
<b>Immunogen Species</b>	Homo sapiens (Human)
<b>Research Area</b>	Tags & Cell Markers
<b>Target Names</b>	ATP5H

## Image



### Western blot

All lanes: ATP5H antibody at 5.16 µg/ml

Lane 1: Mouse kidney tissue

Lane 2: Mouse liver tissue

Lane 3: Mouse brain tissue

Lane 4: HeLa whole cell lysate

Lane 5: HepG2 whole cell lysate

Lane 6: PC-3 whole cell lysate

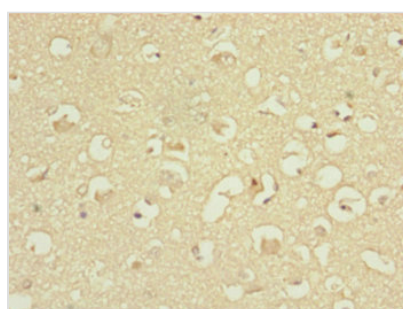
Lane 7: U251 whole cell lysate

Secondary

Goat polyclonal to rabbit IgG at 1/10000 dilution

Predicted band size: 19, 16 kDa

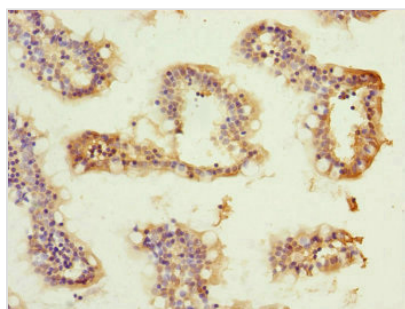
Observed band size: 19 kDa



Immunohistochemistry of paraffin-embedded

human brain tissue using CSB-

PA002366ESR2HU at dilution of 1:100



Immunohistochemistry of paraffin-embedded human small intestine tissue using CSB-PA002366ESR2HU at dilution of 1:100

---

**Usage**

For Research Use Only. Not for use in diagnostic or therapeutic procedures.