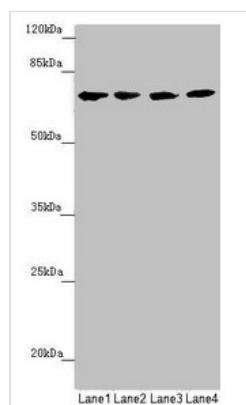




# C8B Antibody

<b>Product Code</b>	CSB-PA004195ESR2HU
<b>Storage</b>	Upon receipt, store at -20°C or -80°C. Avoid repeated freeze.
<b>Uniprot No.</b>	P07358
<b>Immunogen</b>	Recombinant Human Complement component C8 beta chain protein (55-350AA)
<b>Raised In</b>	Rabbit
<b>Species Reactivity</b>	Human, Mouse
<b>Tested Applications</b>	ELISA, WB, IHC; Recommended dilution: WB:1:1000-1:5000, IHC:1:20-1:200
<b>Form</b>	Liquid
<b>Conjugate</b>	Non-conjugated
<b>Storage Buffer</b>	PBS with 0.02% sodium azide, 50% glycerol, pH7.3.
<b>Purification Method</b>	Antigen Affinity Purified
<b>Isotype</b>	IgG
<b>Clonality</b>	Polyclonal
<b>Alias</b>	Complement component C8 beta chain (Complement component 8 subunit beta), C8B
<b>Immunogen Species</b>	Homo sapiens (Human)
<b>Research Area</b>	Cardiovascular
<b>Target Names</b>	C8B

## Image



### Western blot

All lanes: C8B antibody at 1.28µg/ml

Lane 1: Hela whole cell lysate

Lane 2: Jurkat whole cell lysate

Lane 3: Raji whole cell lysate

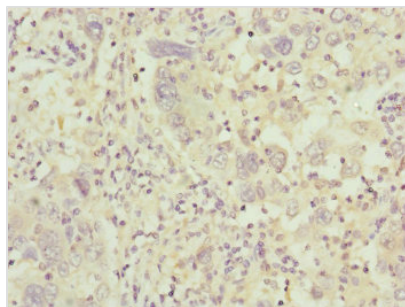
Lane 4: Mouse liver tissue

Secondary

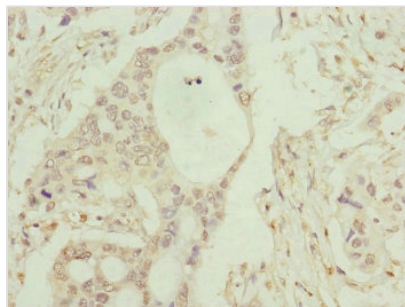
Goat polyclonal to rabbit IgG at 1/10000 dilution

Predicted band size: 67 kDa

Observed band size: 67 kDa



Immunohistochemistry of paraffin-embedded human liver cancer using CSB-PA004195ESR2HU at dilution of 1:100



Immunohistochemistry of paraffin-embedded human pancreatic cancer using CSB-PA004195ESR2HU at dilution of 1:100