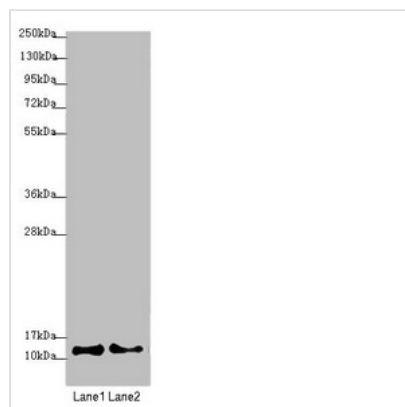




# COX7A2L Antibody

<b>Product Code</b>	CSB-PA005862ESR1HU
<b>Storage</b>	Upon receipt, store at -20°C or -80°C. Avoid repeated freeze.
<b>Uniprot No.</b>	O14548
<b>Immunogen</b>	Recombinant Human Cytochrome c oxidase subunit 7A-related protein, mitochondrial protein (1-114AA)
<b>Raised In</b>	Rabbit
<b>Species Reactivity</b>	Human
<b>Tested Applications</b>	ELISA, WB, IHC; Recommended dilution: WB:1:1000-1:5000, IHC:1:20-1:200
<b>Form</b>	Liquid
<b>Conjugate</b>	Non-conjugated
<b>Storage Buffer</b>	PBS with 0.02% sodium azide, 50% glycerol, pH7.3.
<b>Purification Method</b>	Antigen Affinity Purified
<b>Isotype</b>	IgG
<b>Clonality</b>	Polyclonal
<b>Alias</b>	Cytochrome c oxidase subunit 7A-related protein, mitochondrial (COX7a-related protein) (Cytochrome c oxidase subunit VIIa-related protein) (EB1), COX7A2L, COX7AR COX7RP
<b>Immunogen Species</b>	Homo sapiens (Human)
<b>Research Area</b>	Signal Transduction
<b>Target Names</b>	COX7A2L

## Image



### Western blot

All lanes: COX7A2L antibody at 2.08µg/ml

Lane 1: A549 whole cell lysate

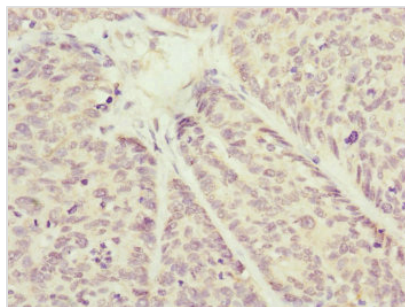
Lane 2: HepG2 whole cell lysate

Secondary

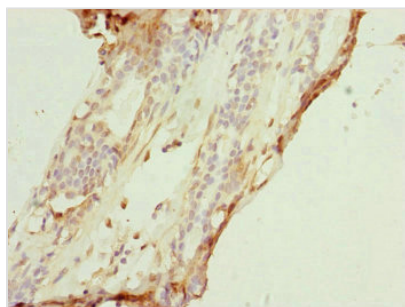
Goat polyclonal to rabbit IgG at 1/10000 dilution

Predicted band size: 13 kDa

Observed band size: 13 kDa



Immunohistochemistry of paraffin-embedded human ovarian cancer using CSB-PA005862ESR1HU at dilution of 1:100



Immunohistochemistry of paraffin-embedded human breast cancer using CSB-PA005862ESR1HU at dilution of 1:100