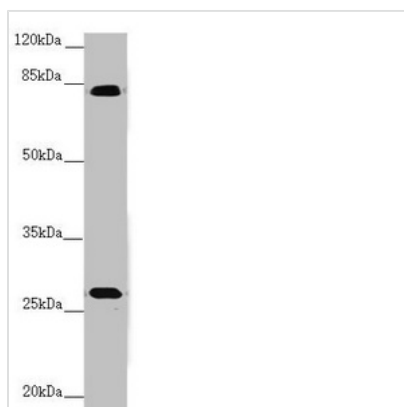




# MID2 Antibody

|                            |   |
|----------------------------|---|
| <b>Product Code</b>        | CSB-PA892324ESR1HU  |
| <b>Uniprot No.</b>         | Q9UJV3  |
| <b>Immunogen</b>           | Recombinant Human Probable E3 ubiquitin-protein ligase MID2 protein (506-735AA)   |
| <b>Raised In</b>           | Rabbit  |
| <b>Species Reactivity</b>  | Human, Mouse  |
| <b>Tested Applications</b> | ELISA, WB, IHC, IF; Recommended dilution: WB:1:500-1:2000, IHC:1:20-1:200, IF:1:50-1:200  |
| <b>Form</b>                | Liquid  |
| <b>Conjugate</b>           | Non-conjugated  |
| <b>Storage Buffer</b>      | PBS with 0.02% sodium azide, 50% glycerol, pH7.3.   |
| <b>Isotype</b>             | IgG   |
| <b>Clonality</b>           | Polyclonal  |
| <b>Alias</b>               | Probable E3 ubiquitin-protein ligase MID2 (EC 2.3.2.27) (Midin-2) (Midline defect 2) (Midline-2) (RING finger protein 60) (RING-type E3 ubiquitin transferase MID2) (Tripartite motif-containing protein 1), MID2, FXY2 RNF60 TRIM1 |
| <b>Immunogen Species</b>   | Homo sapiens (Human)  |
| <b>Target Names</b>        | MID2  |

## Image



### Western blot

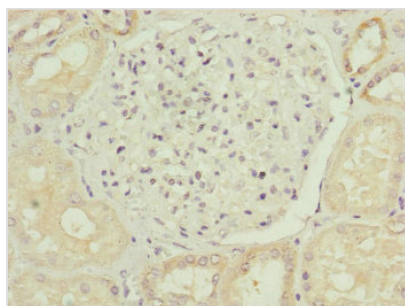
All lanes: MID2 antibody at 3.32 µg/ml + Mouse small intestine tissue

### Secondary

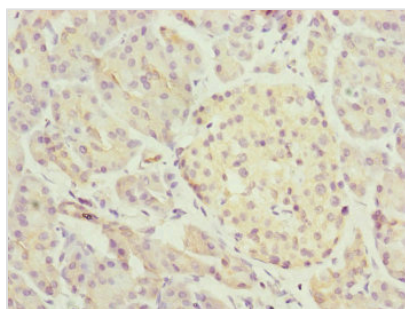
Goat polyclonal to rabbit IgG at 1/10000 dilution

Predicted band size: 84, 80 kDa

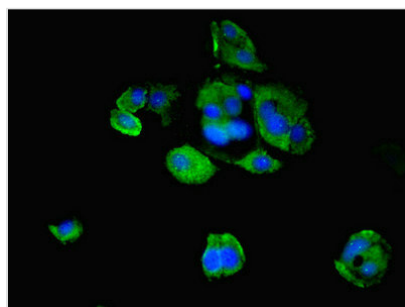
Observed band size: 84, 30 kDa



Immunohistochemistry of paraffin-embedded human kidney tissue using CSB-PA892324ESR1HU at dilution of 1:100



Immunohistochemistry of paraffin-embedded human pancreatic tissue using CSB-PA892324ESR1HU at dilution of 1:100



Immunofluorescent analysis of MCF-7 cells using CSB-PA892324ESR1HU at dilution of 1:100 and Alexa Fluor 488-conjugated AffiniPure Goat Anti-Rabbit IgG(H+L)

## Usage

For Research Use Only. Not for use in diagnostic or therapeutic procedures.