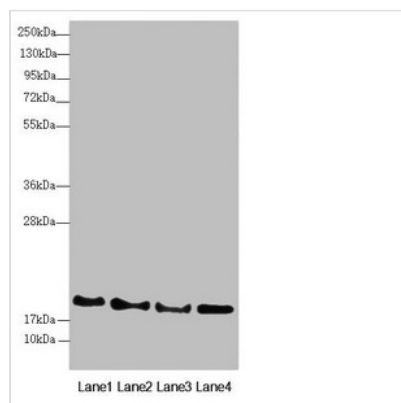




# RNF5 Antibody

|                            |  |
|----------------------------|--|
| <b>Product Code</b>        | CSB-PA857879DSR2HU   |
| <b>Storage</b>             | Upon receipt, store at -20°C or -80°C. Avoid repeated freeze.  |
| <b>Uniprot No.</b>         | Q99942   |
| <b>Immunogen</b>           | Recombinant Human E3 ubiquitin-protein ligase RNF5 protein (1-120AA)   |
| <b>Raised In</b>           | Rabbit   |
| <b>Species Reactivity</b>  | Human  |
| <b>Tested Applications</b> | ELISA, WB, IHC; Recommended dilution: WB:1:1000-1:5000, IHC:1:20-1:200   |
| <b>Form</b>                | Liquid   |
| <b>Conjugate</b>           | Non-conjugated   |
| <b>Storage Buffer</b>      | PBS with 0.02% sodium azide, 50% glycerol, pH7.3.  |
| <b>Purification Method</b> | Antigen Affinity Purified  |
| <b>Isotype</b>             | IgG  |
| <b>Clonality</b>           | Polyclonal   |
| <b>Alias</b>               | E3 ubiquitin-protein ligase RNF5 (EC 2.3.2.27) (Protein G16) (RING finger protein 5) (RING-type E3 ubiquitin transferase RNF5) (Ram1 homolog) (HsRma1), RNF5, G16 NG2 RMA1 |
| <b>Immunogen Species</b>   | Homo sapiens (Human)   |
| <b>Research Area</b>       | Cell Biology   |
| <b>Target Names</b>        | RNF5   |

## Image



### Western blot

All lanes: RNF5 antibody at 3.08µg/ml

Lane 1: A431 whole cell lysate

Lane 2: Jurkat whole cell lysate

Lane 3: HeLa whole cell lysate

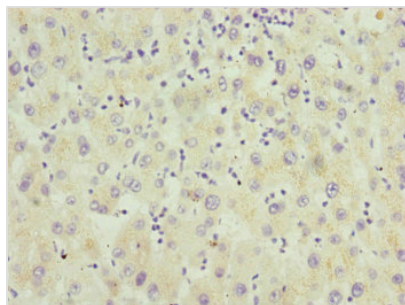
Lane 4: HepG2 whole cell lysate

Secondary

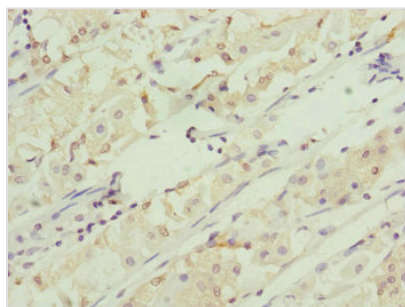
Goat polyclonal to rabbit IgG at 1/10000 dilution

Predicted band size: 20 kDa

Observed band size: 20 kDa



Immunohistochemistry of paraffin-embedded human liver cancer using CSB-PA857879DSR2HU at dilution of 1:100



Immunohistochemistry of paraffin-embedded human gastric cancer using CSB-PA857879DSR2HU at dilution of 1:100

## Usage

For Research Use Only. Not for use in diagnostic or therapeutic procedures.