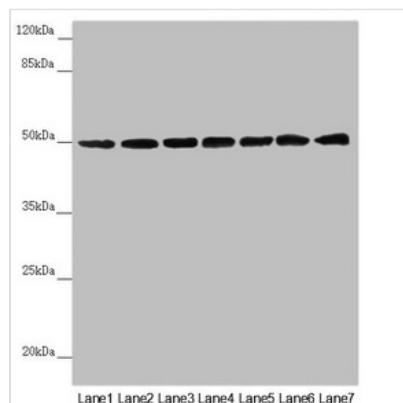




UQCRC1 Antibody

| | |
|----------------------------|---|
| Product Code | CSB-PA025667ESR2HU |
| Storage | Upon receipt, store at -20°C or -80°C. Avoid repeated freeze. |
| Uniprot No. | P31930 |
| Immunogen | Recombinant Human Cytochrome b-c1 complex subunit 1, mitochondrial protein (156-480AA) |
| Raised In | Rabbit |
| Species Reactivity | Human, Mouse |
| Tested Applications | ELISA, WB, IHC; Recommended dilution: WB:1:1000-1:5000, IHC:1:20-1:200 |
| Form | Liquid |
| Conjugate | Non-conjugated |
| Storage Buffer | PBS with 0.02% sodium azide, 50% glycerol, pH7.3. |
| Purification Method | Antigen Affinity Purified |
| Isotype | IgG |
| Clonality | Polyclonal |
| Alias | Cytochrome b-c1 complex subunit 1, mitochondrial (Complex III subunit 1) (Core protein I) (Ubiquinol-cytochrome-c reductase complex core protein 1), UQCRC1 |
| Immunogen Species | Homo sapiens (Human) |
| Research Area | Metabolism |
| Target Names | UQCRC1 |

Image



Western blot

All lanes: UQCRC1 antibody at 2.5µg/ml

Lane 1: Mouse large intestine tissue

Lane 2: Mouse kidney tissue

Lane 3: Mouse brain tissue

Lane 4: LO2 whole cell lysate

Lane 5: Hela whole cell lysate

Lane 6: HepG2 whole cell lysate

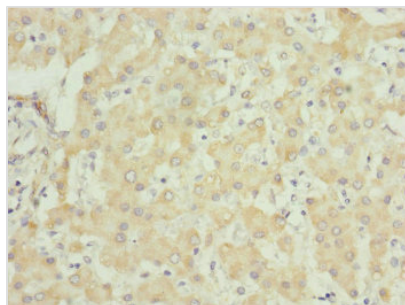
Lane 7: MCF-7 whole cell lysate

Secondary

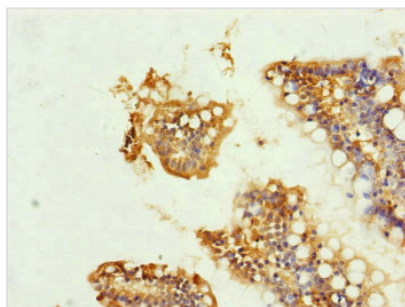
Goat polyclonal to rabbit IgG at 1/10000 dilution

Predicted band size: 53 kDa

Observed band size: 53 kDa



Immunohistochemistry of paraffin-embedded human liver tissue using CSB-PA025667ESR2HU at dilution of 1:100



Immunohistochemistry of paraffin-embedded human small intestine tissue using CSB-PA025667ESR2HU at dilution of 1:100