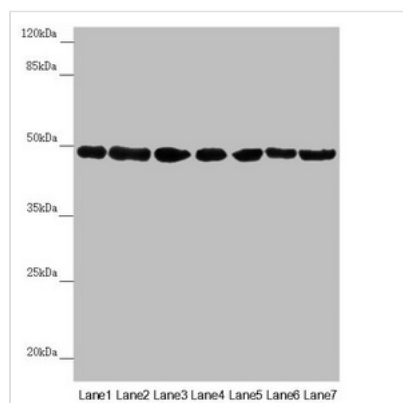




UQCRC2 Antibody

Product Code	CSB-PA025668ESR1HU
Storage	Upon receipt, store at -20°C or -80°C. Avoid repeated freeze.
Uniprot No.	P22695
Immunogen	Recombinant Human Cytochrome b-c1 complex subunit 2, mitochondrial protein (224-453AA)
Raised In	Rabbit
Species Reactivity	Human, Mouse
Tested Applications	ELISA, WB, IHC; Recommended dilution: WB:1:1000-1:5000, IHC:1:20-1:200
Form	Liquid
Conjugate	Non-conjugated
Storage Buffer	PBS with 0.02% sodium azide, 50% glycerol, pH7.3.
Purification Method	Antigen Affinity Purified
Isotype	IgG
Clonality	Polyclonal
Alias	Cytochrome b-c1 complex subunit 2, mitochondrial (Complex III subunit 2) (Core protein II) (Ubiquinol-cytochrome-c reductase complex core protein 2), UQCRC2
Immunogen Species	Homo sapiens (Human)
Research Area	Signal Transduction
Target Names	UQCRC2

Image



Western blot

All lanes: UQCRC2 antibody at 2.95µg/ml

Lane 1: Human placenta tissue

Lane 2: Mouse large intestine tissue

Lane 3: Mouse small intestine tissue

Lane 4: Mouse brain tissue

Lane 5: HepG2 whole cell lysate

Lane 6: Jurkat whole cell lysate

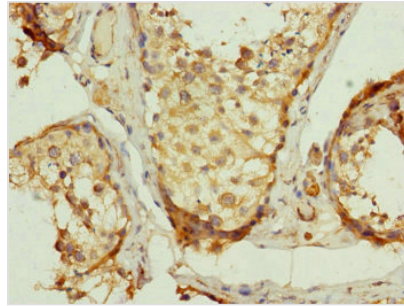
Lane 7: 293T whole cell lysate

Secondary

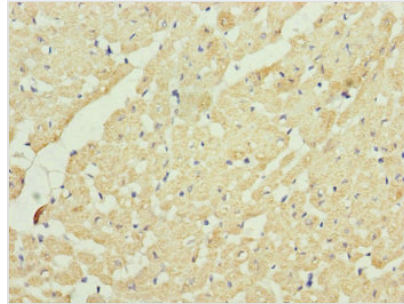
Goat polyclonal to rabbit IgG at 1/10000 dilution

Predicted band size: 48 kDa

Observed band size: 48 kDa



Immunohistochemistry of paraffin-embedded human testis tissue using CSB-PA025668ESR1HU at dilution of 1:100



Immunohistochemistry of paraffin-embedded human heart tissue using CSB-PA025668ESR1HU at dilution of 1:100

Usage

For Research Use Only. Not for use in diagnostic or therapeutic procedures.