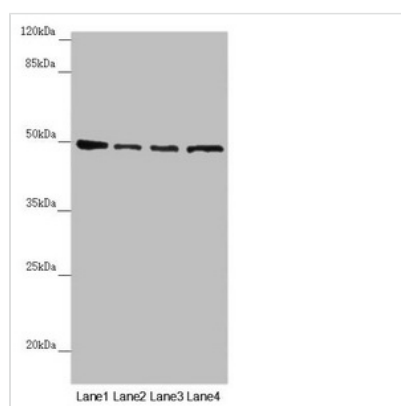




AP1M1 Antibody

Product Code	CSB-PA863146ESR1HU
Storage	Upon receipt, store at -20°C or -80°C. Avoid repeated freeze.
Uniprot No.	Q9BXS5
Immunogen	Recombinant Human AP-1 complex subunit mu-1 protein (1-160AA)
Raised In	Rabbit
Species Reactivity	Human
Tested Applications	ELISA, WB, IHC; Recommended dilution: WB:1:1000-1:5000, IHC:1:20-1:200
Form	Liquid
Conjugate	Non-conjugated
Storage Buffer	PBS with 0.02% sodium azide, 50% glycerol, pH7.3.
Purification Method	Antigen Affinity Purified
Isotype	IgG
Clonality	Polyclonal
Alias	AP-1 complex subunit mu-1 (AP-mu chain family member mu1A) (Adaptor protein complex AP-1 subunit mu-1) (Adaptor-related protein complex 1 subunit mu-1) (Clathrin assembly protein complex 1 mu-1 medium chain 1) (Clathrin coat assembly protein AP47) (Clathrin coat-associated protein AP47) (Golgi adaptor HA1/AP1 adaptin mu-1 subunit) (Mu-adaptin 1) (Mu1A-adaptin), AP1M1, CLTNM
Immunogen Species	Homo sapiens (Human)
Research Area	Microbiology
Target Names	AP1M1

Image



Western blot

All lanes: AP1M1 antibody at 1.43µg/ml

Lane 1: A375 whole cell lysate

Lane 2: Jurkat whole cell lysate

Lane 3: HeLa whole cell lysate

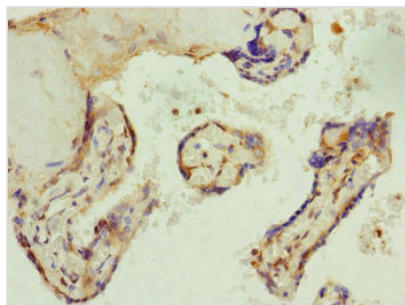
Lane 4: HepG2 whole cell lysate

Secondary

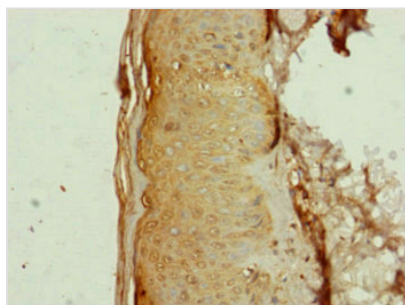
Goat polyclonal to rabbit IgG at 1/10000 dilution

Predicted band size: 49, 50 kDa

Observed band size: 49 kDa



Immunohistochemistry of paraffin-embedded human placenta tissue using CSB-PA863146ESR1HU at dilution of 1:100



Immunohistochemistry of paraffin-embedded human skin tissue using CSB-PA863146ESR1HU at dilution of 1:100

Usage

For Research Use Only. Not for use in diagnostic or therapeutic procedures.