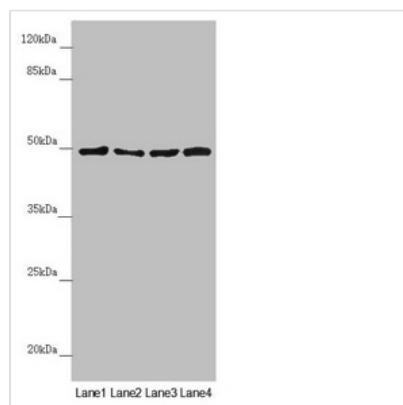




# AP1M1 Antibody

<b>Product Code</b>	CSB-PA863146ESR2HU
<b>Storage</b>	Upon receipt, store at -20°C or -80°C. Avoid repeated freeze.
<b>Uniprot No.</b>	Q9BXS5
<b>Immunogen</b>	Recombinant Human AP-1 complex subunit mu-1 protein (1-160AA)
<b>Raised In</b>	Rabbit
<b>Species Reactivity</b>	Human
<b>Tested Applications</b>	ELISA, WB, IHC; Recommended dilution: WB:1:1000-1:5000, IHC:1:20-1:200
<b>Form</b>	Liquid
<b>Conjugate</b>	Non-conjugated
<b>Storage Buffer</b>	PBS with 0.02% sodium azide, 50% glycerol, pH7.3.
<b>Purification Method</b>	Antigen Affinity Purified
<b>Isotype</b>	IgG
<b>Clonality</b>	Polyclonal
<b>Alias</b>	AP-1 complex subunit mu-1 (AP-mu chain family member mu1A) (Adaptor protein complex AP-1 subunit mu-1) (Adaptor-related protein complex 1 subunit mu-1) (Clathrin assembly protein complex 1 mu-1 medium chain 1) (Clathrin coat assembly protein AP47) (Clathrin coat-associated protein AP47) (Golgi adaptor HA1/AP1 adaptin mu-1 subunit) (Mu-adaptin 1) (Mu1A-adaptin), AP1M1, CLTNM
<b>Immunogen Species</b>	Homo sapiens (Human)
<b>Research Area</b>	Microbiology
<b>Target Names</b>	AP1M1

## Image



### Western blot

All lanes: AP1M1 antibody at 1.38µg/ml

Lane 1: A375 whole cell lysate

Lane 2: Jurkat whole cell lysate

Lane 3: Hela whole cell lysate

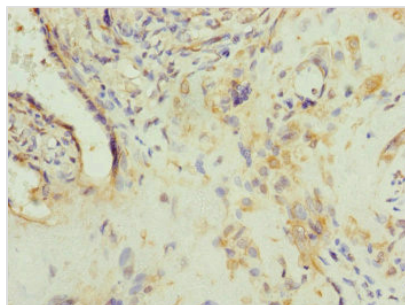
Lane 4: HepG2 whole cell lysate

Secondary

Goat polyclonal to rabbit IgG at 1/10000 dilution

Predicted band size: 49, 50 kDa

Observed band size: 49 kDa



Immunohistochemistry of paraffin-embedded human placenta tissue using CSB-PA863146ESR2HU at dilution of 1:100