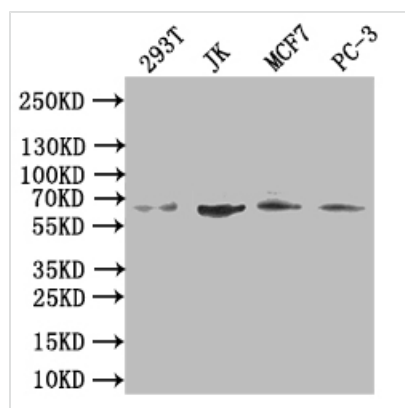




# CDC45 Antibody

<b>Product Code</b>	CSB-PA005020ESR2HU
<b>Storage</b>	Upon receipt, store at -20°C or -80°C. Avoid repeated freeze.
<b>Uniprot No.</b>	O75419
<b>Immunogen</b>	Recombinant Human Cell division control protein 45 homolog protein (1-270AA)
<b>Raised In</b>	Rabbit
<b>Species Reactivity</b>	Human
<b>Tested Applications</b>	ELISA, WB, IHC, IP, IF; Recommended dilution: WB:1:1000-1:5000, IHC:1:20-1:200, IP:1:200-1:2000, IF:1:50-1:200
<b>Form</b>	Liquid
<b>Conjugate</b>	Non-conjugated
<b>Storage Buffer</b>	PBS with 0.02% sodium azide, 50% glycerol, pH7.3.
<b>Purification Method</b>	Antigen Affinity Purified
<b>Isotype</b>	IgG
<b>Clonality</b>	Polyclonal
<b>Product Type</b>	Polyclonal Antibody
<b>Immunogen Species</b>	Homo sapiens (Human)
<b>Research Area</b>	Epigenetics and Nuclear Signaling
<b>Target Names</b>	CDC45

## Image



### Western Blot

Positive WB detected in: 293T whole cell lysate, JK whole cell lysate, MCF7 whole cell lysate, PC-3 whole cell lysate

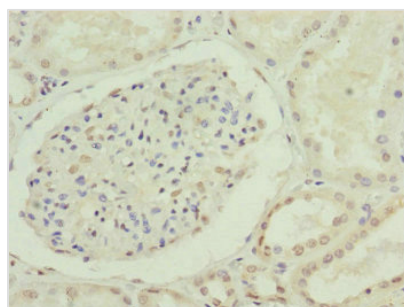
All lanes: CDC45 antibody at 1:500

Secondary

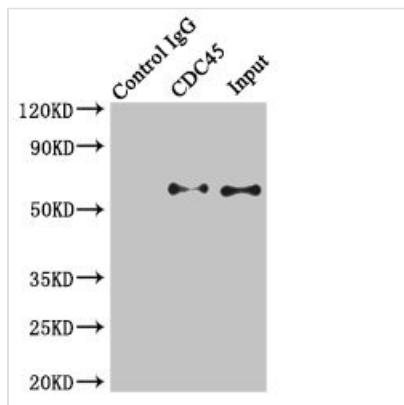
Goat polyclonal to rabbit IgG at 1/50000 dilution

Predicted band size: 66 kDa

Observed band size: 66 kDa

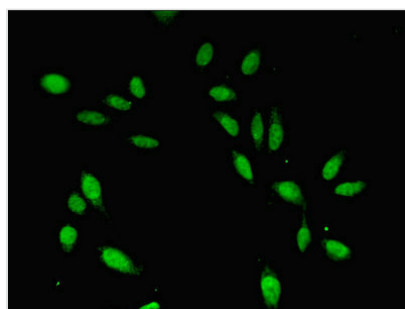


Immunohistochemistry of paraffin-embedded human kidney tissue using CSB-PA005020ESR2HU at dilution of 1:100



Immunoprecipitating CDC45 in K562 whole cell lysate

Lane 1: Rabbit control IgG instead of (1 $\mu$ g) instead of CSB-PA005020ESR2HU in K562 whole cell lysate. For western blotting, a HRP-conjugated light chain specific antibody was used as the Secondary antibody (1/50000)  
 Lane 2: CSB-PA005020ESR2HU (4 $\mu$ g) + K562 whole cell lysate (500 $\mu$ g)  
 Lane 3: K562 whole cell lysate (20 $\mu$ g)



Immunofluorescent analysis of HeLa cells using CSB-PA005020ESR2HU at dilution of 1:100 and Alexa Fluor 488-conjugated AffiniPure Goat Anti-Rabbit IgG(H+L)

## Usage

For Research Use Only. Not for use in diagnostic or therapeutic procedures.