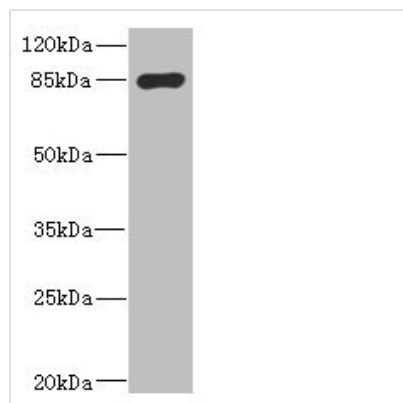




MARK1 Antibody

Product Code	CSB-PA873719DSR1HU
Storage	Upon receipt, store at -20°C or -80°C. Avoid repeated freeze.
Uniprot No.	Q9P0L2
Immunogen	Recombinant Human Serine/threonine-protein kinase MARK1 protein (560-700AA)
Raised In	Rabbit
Species Reactivity	Human, Rat
Tested Applications	ELISA, WB, IHC; Recommended dilution: WB:1:1000-1:5000, IHC:1:20-1:200
Form	Liquid
Conjugate	Non-conjugated
Storage Buffer	PBS with 0.02% sodium azide, 50% glycerol, pH7.3.
Purification Method	Antigen Affinity Purified
Isotype	IgG
Clonality	Polyclonal
Alias	Serine/threonine-protein kinase MARK1 (EC 2.7.11.1) (EC 2.7.11.26) (MAP/microtubule affinity-regulating kinase 1) (PAR1 homolog c) (Par-1c) (Par1c), MARK1, KIAA1477 MARK
Immunogen Species	Homo sapiens (Human)
Research Area	Signal Transduction
Target Names	MARK1

Image



Western blot

All lanes: MARK1 antibody IgG at 2.65µg/ml +

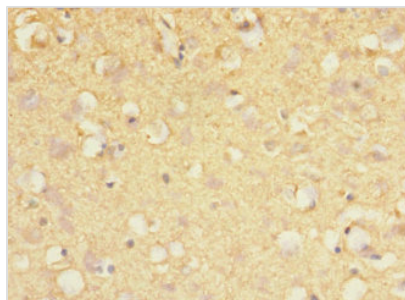
Rat heart tissue

Secondary

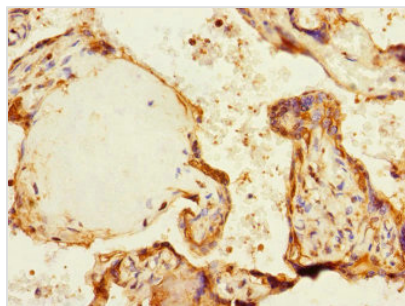
Goat polyclonal to rabbit IgG at 1/10000 dilution

Predicted band size: 90, 73, 85 kDa

Observed band size: 90 kDa



Immunohistochemistry of paraffin-embedded human brain tissue using CSB-PA873719DSR1HU at dilution of 1:100



Immunohistochemistry of paraffin-embedded human placenta tissue using CSB-PA873719DSR1HU at dilution of 1:100

Usage

For Research Use Only. Not for use in diagnostic or therapeutic procedures.