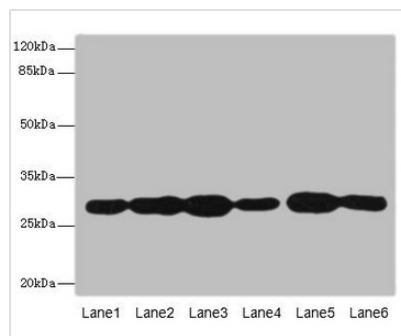




# PMM2 Antibody

<b>Product Code</b>	CSB-PA018238ESR2HU
<b>Storage</b>	Upon receipt, store at -20°C or -80°C. Avoid repeated freeze.
<b>Uniprot No.</b>	O15305
<b>Immunogen</b>	Recombinant Human Phosphomannomutase 2 protein (1-246AA)
<b>Raised In</b>	Rabbit
<b>Species Reactivity</b>	Human
<b>Tested Applications</b>	ELISA, WB, IHC, IP; Recommended dilution: WB:1:1000-1:5000, IHC:1:20-1:200, IP:1:200-1:2000
<b>Form</b>	Liquid
<b>Conjugate</b>	Non-conjugated
<b>Storage Buffer</b>	PBS with 0.02% sodium azide, 50% glycerol, pH7.3.
<b>Purification Method</b>	Antigen Affinity Purified
<b>Isotype</b>	IgG
<b>Clonality</b>	Polyclonal
<b>Alias</b>	Phosphomannomutase 2 (PMM 2) (EC 5.4.2.8), PMM2
<b>Immunogen Species</b>	Homo sapiens (Human)
<b>Research Area</b>	Signal Transduction
<b>Target Names</b>	PMM2

## Image



### Western blot

All lanes: PMM2 antibody at 3.8µg/ml

Lane 1: A549 whole cell lysate

Lane 2: HepG2 whole cell lysate

Lane 3: MCF-7 whole cell lysate

Lane 4: K562 whole cell lysate

Lane 5: Hela whole cell lysate

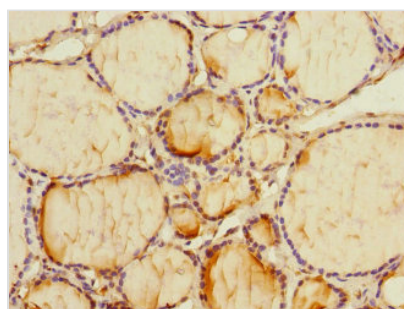
Lane 6: 293T whole cell lysate

Secondary

Goat polyclonal to rabbit IgG at 1/10000 dilution

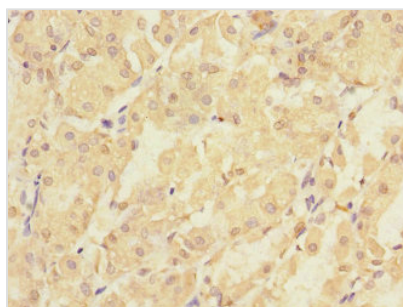
Predicted band size: 29, 14 kDa

Observed band size: 29 kDa

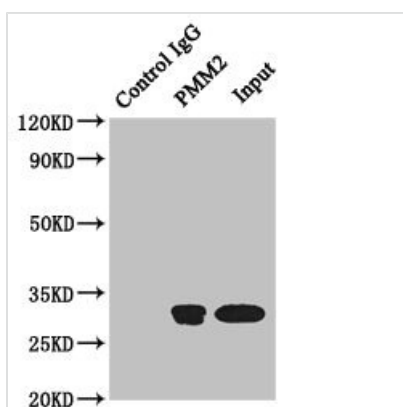


Immunohistochemistry of paraffin-embedded human thyroid tissue using CSB-

PA018238ESR2HU at dilution of 1:100



Immunohistochemistry of paraffin-embedded human gastric cancer using CSB-PA018238ESR2HU at dilution of 1:100



Immunoprecipitating PMM2 in Hela whole cell lysate

Lane 1: Rabbit control IgG instead of (1 $\mu$ g) instead of CSB-PA018238ESR2HU in Hela whole cell lysate. For western blotting, a HRP-conjugated anti-rabbit IgG, specific to the non-reduced form of IgG was used as the Secondary antibody (1/50000)

Lane 2: CSB-PA018238ESR2HU (4 $\mu$ g) + Hela whole cell lysate (500 $\mu$ g)

Lane 3: Hela whole cell lysate (20 $\mu$ g)