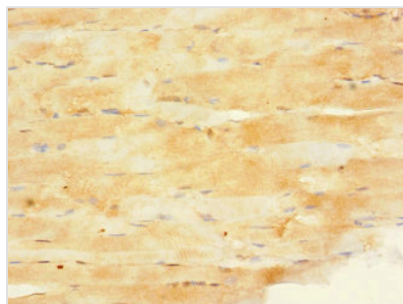




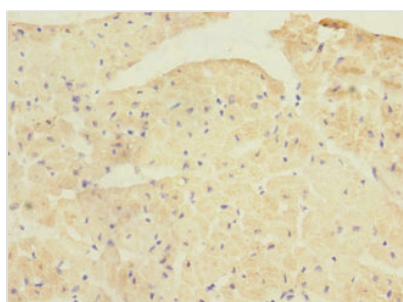
PPP1R3A Antibody

Product Code	CSB-PA613701DSR1HU
Storage	Upon receipt, store at -20°C or -80°C. Avoid repeated freeze.
Uniprot No.	Q16821
Immunogen	Recombinant Human Protein phosphatase 1 regulatory subunit 3A protein (900-1080AA)
Raised In	Rabbit
Species Reactivity	Human
Tested Applications	ELISA, IHC; Recommended dilution: IHC:1:20-1:200
Form	Liquid
Conjugate	Non-conjugated
Storage Buffer	PBS with 0.02% sodium azide, 50% glycerol, pH7.3.
Purification Method	Antigen Affinity Purified
Isotype	IgG
Clonality	Polyclonal
Alias	Protein phosphatase 1 regulatory subunit 3A (Protein phosphatase 1 glycogen-associated regulatory subunit) (Protein phosphatase type-1 glycogen targeting subunit) (RG1), PPP1R3A, PP1G
Immunogen Species	Homo sapiens (Human)
Research Area	Signal Transduction
Target Names	PPP1R3A

Image



Immunohistochemistry of paraffin-embedded human skeletal muscle tissue using CSB-PA613701DSR1HU at dilution of 1:100



Immunohistochemistry of paraffin-embedded human heart tissue using CSB-PA613701DSR1HU at dilution of 1:100



Usage

For Research Use Only. Not for use in diagnostic or therapeutic procedures.