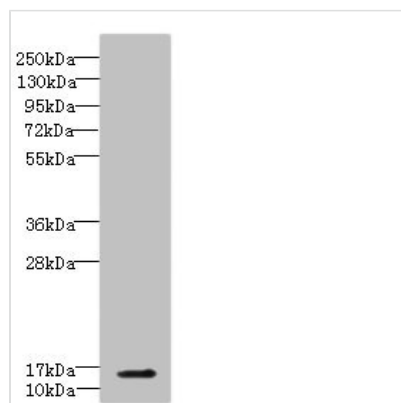




CBY1 Antibody

Product Code	CSB-PA896889ESR1HU
Storage	Upon receipt, store at -20°C or -80°C. Avoid repeated freeze.
Uniprot No.	Q9Y3M2
Immunogen	Recombinant Human Protein chibby homolog 1 protein (1-126AA)
Raised In	Rabbit
Species Reactivity	Human, Mouse
Tested Applications	ELISA, WB, IHC; Recommended dilution: WB:1:1000-1:5000, IHC:1:20-1:200
Form	Liquid
Conjugate	Non-conjugated
Storage Buffer	PBS with 0.02% sodium azide, 50% glycerol, pH7.3.
Purification Method	Antigen Affinity Purified
Isotype	IgG
Clonality	Polyclonal
Alias	Protein chibby homolog 1 (ARPP-binding protein) (Cytosolic leucine-rich protein) (PIGEA-14) (PKD2 interactor, Golgi and endoplasmic reticulum-associated 1), CBY1, ARB1 C22orf2 CBY PGEA1
Immunogen Species	Homo sapiens (Human)
Research Area	Signal Transduction
Target Names	CBY1

Image



Western blot

All lanes: CBY1 antibody IgG at 5.3µg/ml +

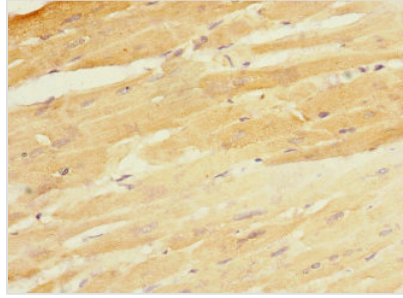
Mouse lung tissue

Secondary

Goat polyclonal to rabbit IgG at 1/10000 dilution

Predicted band size: 14 kDa

Observed band size: 14 kDa



Immunohistochemistry of paraffin-embedded human heart tissue using CSB-PA896889ESR1HU at dilution of 1:100

Usage

For Research Use Only. Not for use in diagnostic or therapeutic procedures.