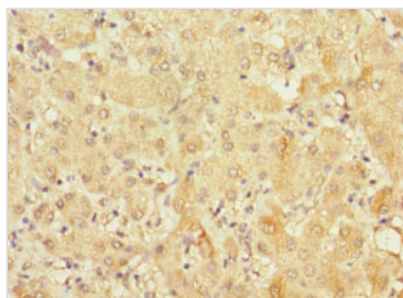




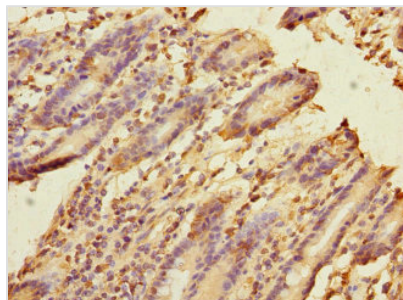
# FRMD6 Antibody

<b>Product Code</b>	CSB-PA822270ESR2HU
<b>Storage</b>	Upon receipt, store at -20°C or -80°C. Avoid repeated freeze.
<b>Uniprot No.</b>	Q96NE9
<b>Immunogen</b>	Recombinant Human FERM domain-containing protein 6 protein (413-622AA)
<b>Raised In</b>	Rabbit
<b>Species Reactivity</b>	Human
<b>Tested Applications</b>	ELISA, WB, IHC; Recommended dilution: WB:1:500-1:5000, IHC:1:20-1:500
<b>Form</b>	Liquid
<b>Conjugate</b>	Non-conjugated
<b>Storage Buffer</b>	PBS with 0.02% sodium azide, 50% glycerol, pH7.3.
<b>Purification Method</b>	Antigen Affinity Purified
<b>Isotype</b>	IgG
<b>Clonality</b>	Polyclonal
<b>Alias</b>	FERM domain-containing protein 6 (Willin), FRMD6, C14orf31
<b>Immunogen Species</b>	Homo sapiens (Human)
<b>Research Area</b>	Cancer
<b>Target Names</b>	FRMD6

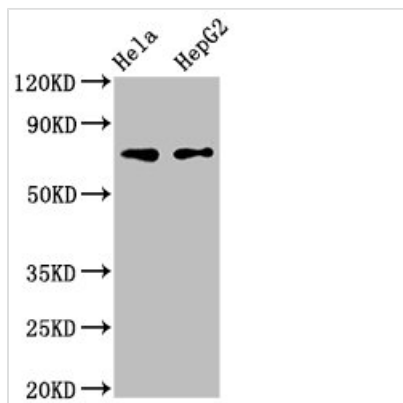
## Image



Immunohistochemistry of paraffin-embedded human liver cancer using CSB-PA822270ESR2HU at dilution of 1:100



Immunohistochemistry of paraffin-embedded human duodenal tissue using CSB-PA822270ESR2HU at dilution of 1:100



#### Western Blot

Positive WB detected in: HeLa whole cell lysate, HepG2 whole cell lysate

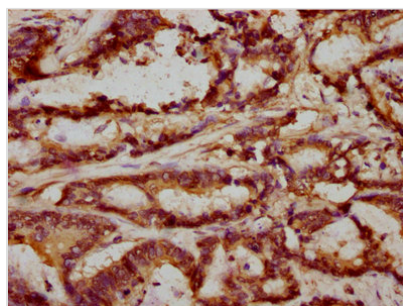
All lanes: FRMD6 antibody at 3 $\mu$ g/ml

#### Secondary

Goat polyclonal to rabbit IgG at 1/50000 dilution

Predicted band size: 73, 71, 30 kDa

Observed band size: 73 kDa



IHC image of CSB-PA822270ESR2HU diluted at 1:293 and staining in paraffin-embedded human colon cancer performed on a Leica Bond<sup>TM</sup> system. After dewaxing and hydration, antigen retrieval was mediated by high pressure in a citrate buffer (pH 6.0). Section was blocked with 10% normal goat serum 30min at RT. Then primary antibody (1% BSA) was incubated at 4°C overnight. The primary is detected by a biotinylated secondary antibody and visualized using an HRP conjugated SP system.