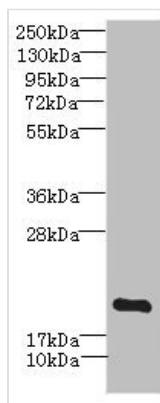




# MYL7 Antibody

<b>Product Code</b>	CSB-PA889545ESR1HU
<b>Storage</b>	Upon receipt, store at -20°C or -80°C. Avoid repeated freeze.
<b>Uniprot No.</b>	Q01449
<b>Immunogen</b>	Recombinant Human Myosin regulatory light chain 2, atrial isoform protein (1-175AA)
<b>Raised In</b>	Rabbit
<b>Species Reactivity</b>	Human, Mouse
<b>Tested Applications</b>	ELISA, WB, IHC; Recommended dilution: WB:1:1000-1:5000, IHC:1:20-1:200
<b>Form</b>	Liquid
<b>Conjugate</b>	Non-conjugated
<b>Storage Buffer</b>	PBS with 0.02% sodium azide, 50% glycerol, pH7.3.
<b>Purification Method</b>	Antigen Affinity Purified
<b>Isotype</b>	IgG
<b>Clonality</b>	Polyclonal
<b>Alias</b>	Myosin regulatory light chain 2, atrial isoform (MLC-2a) (MLC2a) (Myosin light chain 2a) (Myosin regulatory light chain 7), MYL7, MYL2A MYLC2A
<b>Immunogen Species</b>	Homo sapiens (Human)
<b>Research Area</b>	Signal Transduction
<b>Target Names</b>	MYL7

## Image



Western blot

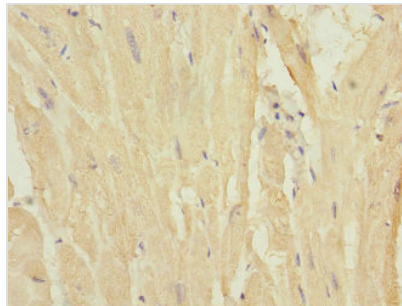
All lanes: MYL7 antibody IgG at 2.69µg/ml +  
Mouse skeletal muscle tissue

Secondary

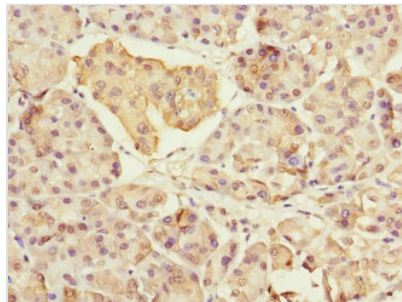
Goat polyclonal to rabbit IgG at 1/10000 dilution

Predicted band size: 19 kDa

Observed band size: 19 kDa



Immunohistochemistry of paraffin-embedded human heart tissue using CSB-PA889545ESR1HU at dilution of 1:100



Immunohistochemistry of paraffin-embedded human pancreatic tissue using CSB-PA889545ESR1HU at dilution of 1:100