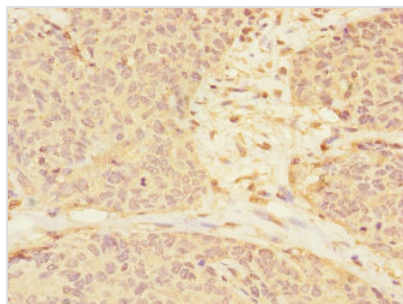




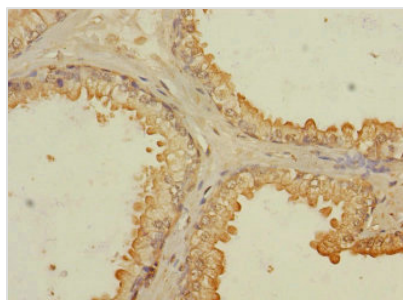
RASSF6 Antibody

Product Code	CSB-PA754570ESR2HU
Storage	Upon receipt, store at -20°C or -80°C. Avoid repeated freeze.
Uniprot No.	Q6ZTQ3
Immunogen	Recombinant Human Ras association domain-containing protein 6 protein (1-303AA)
Raised In	Rabbit
Species Reactivity	Human
Tested Applications	ELISA, IHC; Recommended dilution: IHC:1:20-1:500
Form	Liquid
Conjugate	Non-conjugated
Storage Buffer	PBS with 0.02% sodium azide, 50% glycerol, pH7.3.
Purification Method	Antigen Affinity Purified
Isotype	IgG
Clonality	Polyclonal
Alias	Ras association domain-containing protein 6, RASSF6
Immunogen Species	Homo sapiens (Human)
Research Area	Cell Biology
Target Names	RASSF6

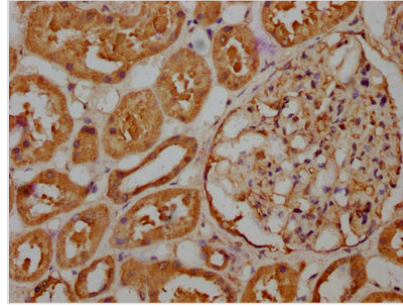
Image



Immunohistochemistry of paraffin-embedded human ovarian cancer using CSB-PA754570ESR2HU at dilution of 1:100



Immunohistochemistry of paraffin-embedded human prostate cancer using CSB-PA754570ESR2HU at dilution of 1:100



IHC image of CSB-PA754570ESR2HU diluted at 1:263 and staining in paraffin-embedded human kidney tissue performed on a Leica Bond™ system. After dewaxing and hydration, antigen retrieval was mediated by high pressure in a citrate buffer (pH 6.0). Section was blocked with 10% normal goat serum 30min at RT. Then primary antibody (1% BSA) was incubated at 4°C overnight. The primary is detected by a biotinylated secondary antibody and visualized using an HRP conjugated SP system.

Usage

For Research Use Only. Not for use in diagnostic or therapeutic procedures.