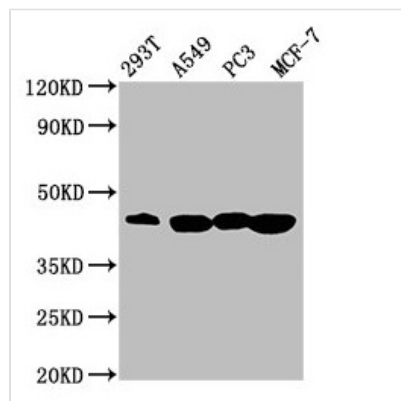




SAV1 Antibody

Product Code	CSB-PA875672ESR1HU
Storage	Upon receipt, store at -20°C or -80°C. Avoid repeated freeze.
Uniprot No.	Q9H4B6
Immunogen	Recombinant Human Protein salvador homolog 1 protein (1-210AA)
Raised In	Rabbit
Species Reactivity	Human
Tested Applications	ELISA, WB, IHC, IF; Recommended dilution: WB:1:500-1:5000, IHC:1:20-1:500, IF:1:50-1:200
Form	Liquid
Conjugate	Non-conjugated
Storage Buffer	PBS with 0.02% sodium azide, 50% glycerol, pH7.3.
Purification Method	Antigen Affinity Purified
Isotype	IgG
Clonality	Polyclonal
Alias	Protein salvador homolog 1 (45 kDa WW domain protein) (hWW45), SAV1, WW45
Immunogen Species	Homo sapiens (Human)
Research Area	Signal Transduction
Target Names	SAV1

Image



Western Blot

Positive WB detected in: 293T whole cell lysate, A549 whole cell lysate, PC-3 whole cell lysate, MCF-7 whole cell lysate

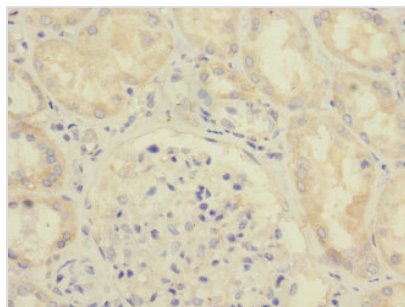
All lanes: SAV1 antibody at 3.64µg/ml

Secondary

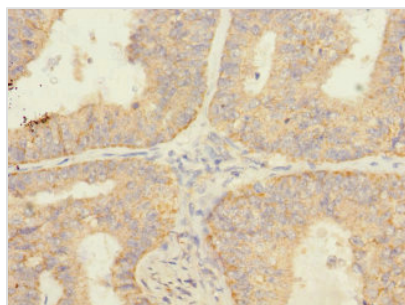
Goat polyclonal to rabbit IgG at 1/50000 dilution

Predicted band size: 45 kDa

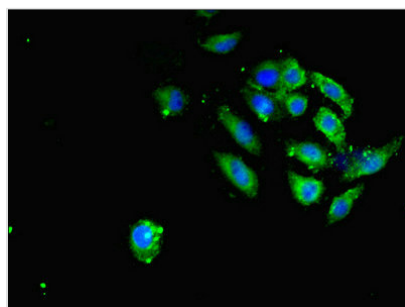
Observed band size: 45 kDa



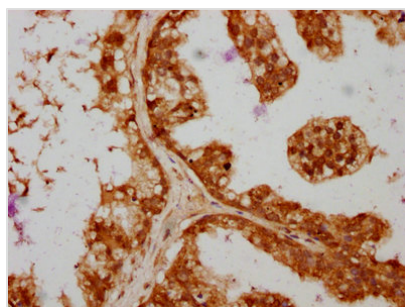
Immunohistochemistry of paraffin-embedded human kidney tissue using CSB-PA875672ESR1HU at dilution of 1:100



Immunohistochemistry of paraffin-embedded human endometrial cancer using CSB-PA875672ESR1HU at dilution of 1:100



Immunofluorescent analysis of A549 cells using CSB-PA875672ESR1HU at dilution of 1:100 and Alexa Fluor 488-conjugated AffiniPure Goat Anti-Rabbit IgG(H+L)



IHC image of CSB-PA875672ESR1HU diluted at 1:364 and staining in paraffin-embedded human prostate cancer performed on a Leica BondTM system. After dewaxing and hydration, antigen retrieval was mediated by high pressure in a citrate buffer (pH 6.0). Section was blocked with 10% normal goat serum 30min at RT. Then primary antibody (1% BSA) was incubated at 4°C overnight. The primary is detected by a biotinylated secondary antibody and visualized using an HRP conjugated SP system.

Usage

For Research Use Only. Not for use in diagnostic or therapeutic procedures.