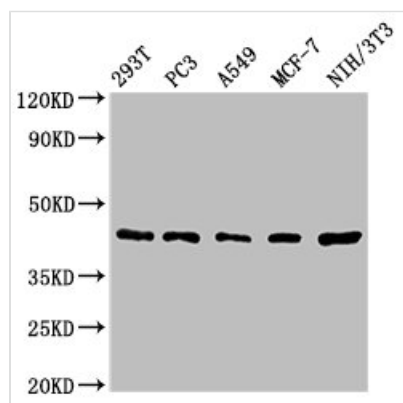




SAV1 Antibody

Product Code	CSB-PA875672ESR2HU
Storage	Upon receipt, store at -20°C or -80°C. Avoid repeated freeze.
Uniprot No.	Q9H4B6
Immunogen	Recombinant Human Protein salvador homolog 1 protein (1-210AA)
Raised In	Rabbit
Species Reactivity	Human, Mouse
Tested Applications	ELISA, WB, IHC, IF, IP; Recommended dilution: WB:1:500-1:2000, IHC:1:20-1:200, IF:1:50-1:200, IP:1:200-1:2000
Form	Liquid
Conjugate	Non-conjugated
Storage Buffer	PBS with 0.02% sodium azide, 50% glycerol, pH7.3.
Purification Method	Antigen Affinity Purified
Isotype	IgG
Clonality	Polyclonal
Alias	Protein salvador homolog 1 (45 kDa WW domain protein) (hWW45), SAV1, WW45
Immunogen Species	Homo sapiens (Human)
Research Area	Signal Transduction
Target Names	SAV1

Image



Western Blot

Positive WB detected in: 293T whole cell lysate, PC-3 whole cell lysate, A549 whole cell lysate, MCF-7 whole cell lysate, NIH/3T3 whole cell lysate

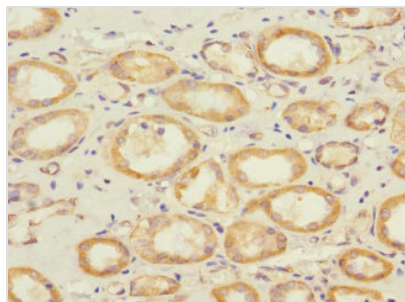
All lanes: SAV1 antibody at 1.62µg/ml

Secondary

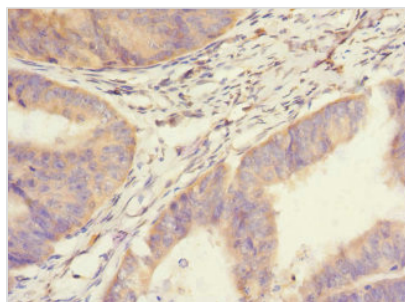
Goat polyclonal to rabbit IgG at 1/50000 dilution

Predicted band size: 45 kDa

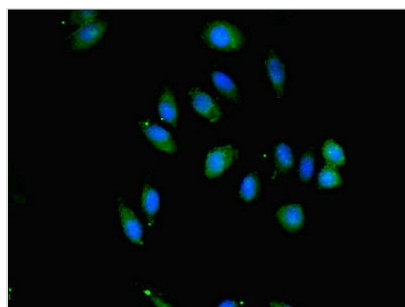
Observed band size: 45 kDa



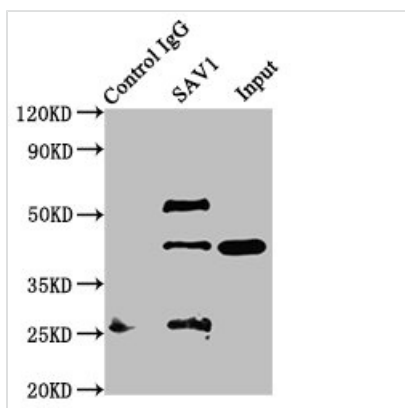
Immunohistochemistry of paraffin-embedded human kidney tissue using CSB-PA875672ESR2HU at dilution of 1:100



Immunohistochemistry of paraffin-embedded human endometrial cancer using CSB-PA875672ESR2HU at dilution of 1:100



Immunofluorescent analysis of A549 cells using CSB-PA875672ESR2HU at dilution of 1:100 and Alexa Fluor 488-conjugated AffiniPure Goat Anti-Rabbit IgG(H+L)



Immunoprecipitating SAV1 in NIH/3T3 whole cell lysate
 Lane 1: Rabbit control IgG instead of CSB-PA875672ESR2HU in NIH/3T3 whole cell lysate. For western blotting, a HRP-conjugated Protein G antibody was used as the secondary antibody (1/2000)
 Lane 2: CSB-PA875672ESR2HU (5µg) + NIH/3T3 whole cell lysate (500µg)
 Lane 3: NIH/3T3 whole cell lysate (20µg)

Usage

For Research Use Only. Not for use in diagnostic or therapeutic procedures.