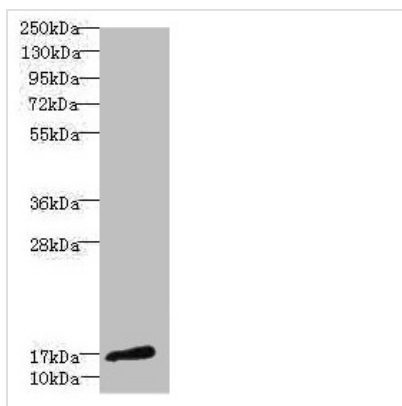




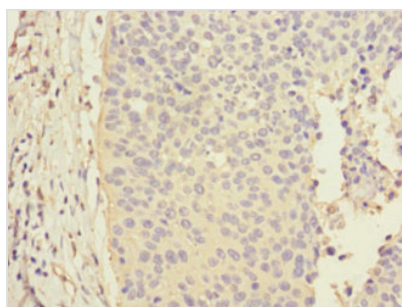
CALML3 Antibody

Product Code	CSB-PA004453DSR1HU
Storage	Upon receipt, store at -20°C or -80°C. Avoid repeated freeze.
Uniprot No.	P27482
Immunogen	Recombinant Human Calmodulin-like protein 3 protein (1-149AA)
Raised In	Rabbit
Species Reactivity	Human
Tested Applications	ELISA, WB, IHC; Recommended dilution: WB:1:1000-1:5000, IHC:1:20-1:200
Form	Liquid
Conjugate	Non-conjugated
Storage Buffer	PBS with 0.02% sodium azide, 50% glycerol, pH7.3.
Purification Method	Antigen Affinity Purified
Isotype	IgG
Clonality	Polyclonal
Alias	Calmodulin-like protein 3 (CaM-like protein) (CLP) (Calmodulin-related protein NB-1), CALML3
Immunogen Species	Homo sapiens (Human)
Research Area	Tags & Cell Markers
Target Names	CALML3

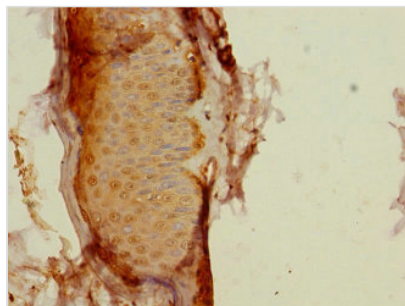
Image



Western blot
 All lanes: CALML3 antibody at 1.44µg/ml + A431 whole cell lysate
 Secondary
 Goat polyclonal to rabbit IgG at 1/10000 dilution
 Predicted band size: 17 kDa
 Observed band size: 17 kDa



Immunohistochemistry of paraffin-embedded human cervical cancer using CSB-PA004453DSR1HU at dilution of 1:100



Immunohistochemistry of paraffin-embedded human skin tissue using CSB-PA004453DSR1HU at dilution of 1:100

Usage

For Research Use Only. Not for use in diagnostic or therapeutic procedures.