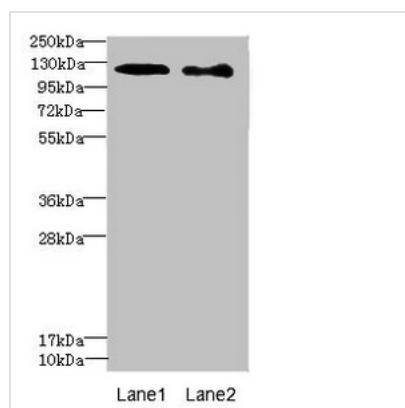




DIAPH2 Antibody

Product Code	CSB-PA006891ESR1HU
Storage	Upon receipt, store at -20°C or -80°C. Avoid repeated freeze.
Uniprot No.	O60879
Immunogen	Recombinant Human Protein diaphanous homolog 2 protein (1-120AA)
Raised In	Rabbit
Species Reactivity	Human
Tested Applications	ELISA, WB, IHC; Recommended dilution: WB:1:1000-1:5000, IHC:1:20-1:200
Form	Liquid
Conjugate	Non-conjugated
Storage Buffer	PBS with 0.02% sodium azide, 50% glycerol, pH7.3.
Purification Method	Antigen Affinity Purified
Isotype	IgG
Clonality	Polyclonal
Alias	Protein diaphanous homolog 2 (Diaphanous-related formin-2) (DRF2), DIAPH2, DIA
Immunogen Species	Homo sapiens (Human)
Research Area	Signal Transduction
Target Names	DIAPH2

Image



Western blot

All lanes: DIAPH2 antibody at 4.75μg/ml

Lane 1: 293T whole cell lysate

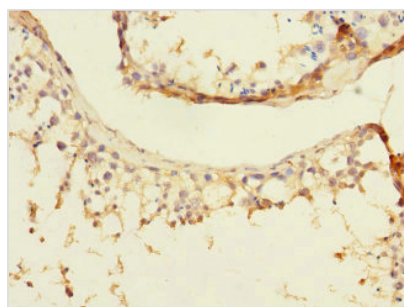
Lane 2: Hela whole cell lysate

Secondary

Goat polyclonal to rabbit IgG at 1/10000 dilution

Predicted band size: 126, 125 kDa

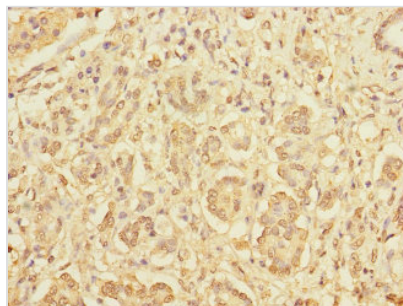
Observed band size: 126 kDa



Immunohistochemistry of paraffin-embedded

human testis tissue using CSB-

PA006891ESR1HU at dilution of 1:100



Immunohistochemistry of paraffin-embedded human pancreatic cancer using CSB-PA006891ESR1HU at dilution of 1:100