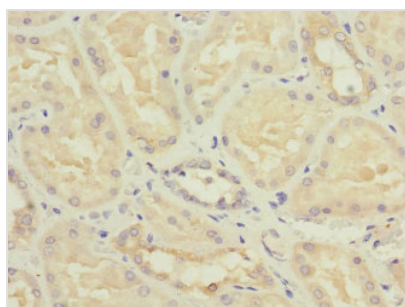




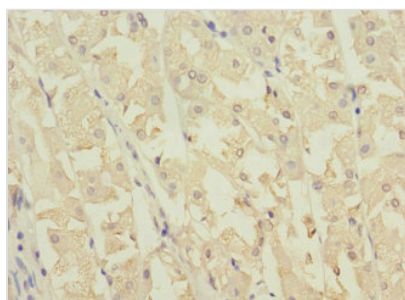
NME3 Antibody

| | |
|----------------------------|---|
| Product Code | CSB-PA614400ESR2HU |
| Storage | Upon receipt, store at -20°C or -80°C. Avoid repeated freeze. |
| Uniprot No. | Q13232 |
| Immunogen | Recombinant Human Nucleoside diphosphate kinase 3 protein (20-169AA) |
| Raised In | Rabbit |
| Species Reactivity | Human |
| Tested Applications | ELISA, IHC, IF; Recommended dilution: IHC:1:20-1:200, IF:1:50-1:200 |
| Form | Liquid |
| Conjugate | Non-conjugated |
| Storage Buffer | PBS with 0.02% sodium azide, 50% glycerol, pH7.3. |
| Purification Method | Antigen Affinity Purified |
| Isotype | IgG |
| Clonality | Polyclonal |
| Alias | Nucleoside diphosphate kinase 3 (NDK 3) (NDP kinase 3) (EC 2.7.4.6) (DR-nm23) (Nucleoside diphosphate kinase C) (NDPKC) (nm23-H3), NME3 |
| Immunogen Species | Homo sapiens (Human) |
| Research Area | Signal Transduction |
| Target Names | NME3 |

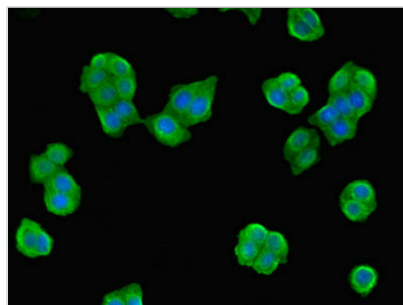
Image



Immunohistochemistry of paraffin-embedded human kidney tissue using CSB-PA614400ESR2HU at dilution of 1:100



Immunohistochemistry of paraffin-embedded human gastric cancer using CSB-PA614400ESR2HU at dilution of 1:100



Immunofluorescent analysis of PC-3 cells using CSB-PA614400ESR2HU at dilution of 1:100 and Alexa Fluor 488-conjugated AffiniPure Goat Anti-Rabbit IgG(H+L)

Usage

For Research Use Only. Not for use in diagnostic or therapeutic procedures.