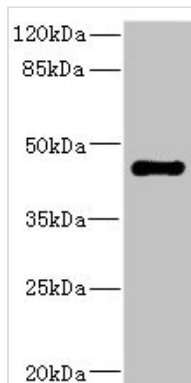




STRADA Antibody

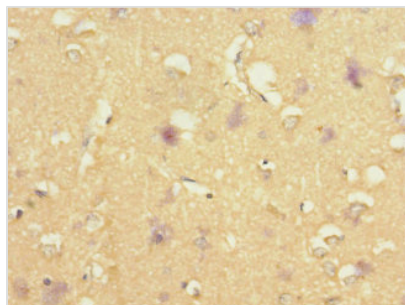
Product Code	CSB-PA745759ESR2HU
Storage	Upon receipt, store at -20°C or -80°C. Avoid repeated freeze.
Uniprot No.	Q7RTN6
Immunogen	Recombinant Human STE20-related kinase adapter protein alpha protein (25-210AA)
Raised In	Rabbit
Species Reactivity	Human, Rat
Tested Applications	ELISA, WB, IHC; Recommended dilution: WB:1:1000-1:5000, IHC:1:20-1:200
Form	Liquid
Conjugate	Non-conjugated
Storage Buffer	PBS with 0.02% sodium azide, 50% glycerol, pH7.3.
Purification Method	Antigen Affinity Purified
Isotype	IgG
Clonality	Polyclonal
Alias	STE20-related kinase adapter protein alpha (STRAD alpha) (STE20-related adapter protein) (Serologically defined breast cancer antigen NY-BR-96), STRADA, LYK5 STRAD
Immunogen Species	Homo sapiens (Human)
Research Area	Cell Biology
Target Names	STRADA

Image

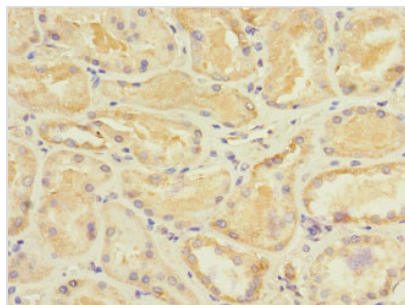


Western blot

All lanes: STRADA antibody IgG at 1.98μg/ml +
Rat heart tissue
Secondary
Goat polyclonal to rabbit IgG at 1/10000 dilution
Predicted band size: 49, 39, 44, 34, 42, 35 kDa
Observed band size: 49 kDa



Immunohistochemistry of paraffin-embedded human brain tissue using CSB-PA745759ESR2HU at dilution of 1:100



Immunohistochemistry of paraffin-embedded human kidney tissue using CSB-PA745759ESR2HU at dilution of 1:100