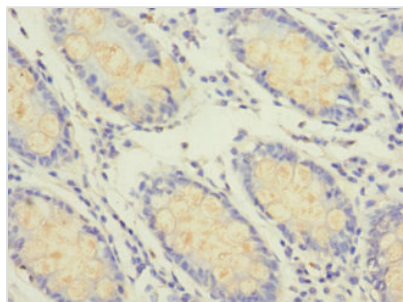




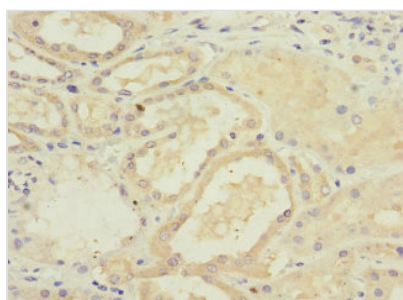
GFM2 Antibody

Product Code	CSB-PA856889ESR2HU
Storage	Upon receipt, store at -20°C or -80°C. Avoid repeated freeze.
Uniprot No.	Q969S9
Immunogen	Recombinant Human Ribosome-releasing factor 2, mitochondrial protein (520-779AA)
Raised In	Rabbit
Species Reactivity	Human
Tested Applications	ELISA, IHC; Recommended dilution: IHC:1:20-1:200
Form	Liquid
Conjugate	Non-conjugated
Storage Buffer	PBS with 0.02% sodium azide, 50% glycerol, pH7.3.
Purification Method	Antigen Affinity Purified
Isotype	IgG
Clonality	Polyclonal
Alias	Ribosome-releasing factor 2, mitochondrial (RRF2mt) (Elongation factor G 2, mitochondrial) (EF-G2mt) (mEF-G 2) (Elongation factor G2) (hEFG2), GFM2, EFG2
Immunogen Species	Homo sapiens (Human)
Research Area	Epigenetics and Nuclear Signaling
Target Names	GFM2

Image



Immunohistochemistry of paraffin-embedded human colon cancer using CSB-PA856889ESR2HU at dilution of 1:100



Immunohistochemistry of paraffin-embedded human kidney tissue using CSB-PA856889ESR2HU at dilution of 1:100



Usage

For Research Use Only. Not for use in diagnostic or therapeutic procedures.