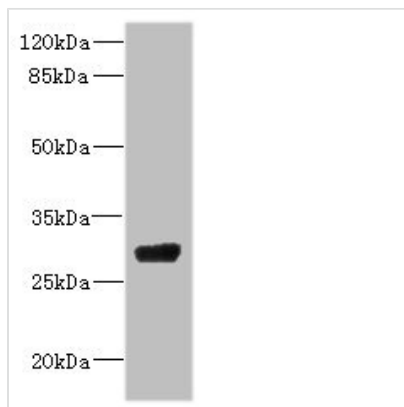




CPSF4 Antibody

Product Code	CSB-PA005919ESR1HU
Storage	Upon receipt, store at -20°C or -80°C. Avoid repeated freeze.
Uniprot No.	O95639
Immunogen	Recombinant Human Cleavage and polyadenylation specificity factor subunit 4 protein (1-244AA)
Raised In	Rabbit
Species Reactivity	Human
Tested Applications	ELISA, WB, IHC; Recommended dilution: WB:1:1000-1:5000, IHC:1:20-1:200
Form	Liquid
Conjugate	Non-conjugated
Storage Buffer	PBS with 0.02% sodium azide, 50% glycerol, pH7.3.
Purification Method	Antigen Affinity Purified
Isotype	IgG
Clonality	Polyclonal
Alias	Cleavage and polyadenylation specificity factor subunit 4 (Cleavage and polyadenylation specificity factor 30 kDa subunit) (CPSF 30 kDa subunit) (NS1 effector domain-binding protein 1) (Neb-1) (No arches homolog), CPSF4, CPSF30 NAR NEB1
Immunogen Species	Homo sapiens (Human)
Research Area	Microbiology
Target Names	CPSF4

Image



Western blot

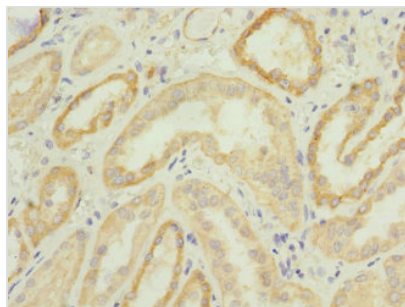
All lanes: CPSF4 antibody IgG at 4.37µg/ml + 293T whole cell lysate

Secondary

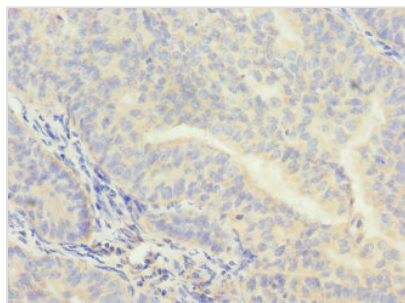
Goat polyclonal to rabbit IgG at 1/10000 dilution

Predicted band size: 31, 28 kDa

Observed band size: 31 kDa



Immunohistochemistry of paraffin-embedded human kidney tissue using CSB-PA005919ESR1HU at dilution of 1:100



Immunohistochemistry of paraffin-embedded human endometrial cancer using CSB-PA005919ESR1HU at dilution of 1:100

Usage

For Research Use Only. Not for use in diagnostic or therapeutic procedures.