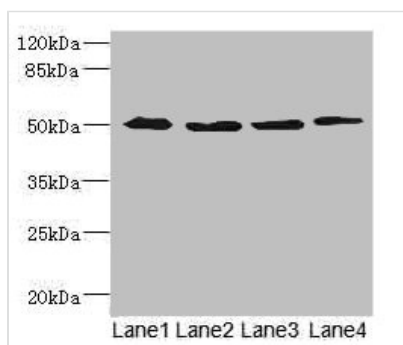




SQOR Antibody

Product Code	CSB-PA022646ESR2HU
Storage	Upon receipt, store at -20°C or -80°C. Avoid repeated freeze.
Uniprot No.	Q9Y6N5
Immunogen	Recombinant Human Sulfide:quinone oxidoreductase, mitochondrial protein (211-450AA)
Raised In	Rabbit
Species Reactivity	Human
Tested Applications	ELISA, WB, IHC; Recommended dilution: WB:1:1000-1:5000, IHC:1:20-1:200
Form	Liquid
Conjugate	Non-conjugated
Storage Buffer	PBS with 0.02% sodium azide, 50% glycerol, pH7.3.
Purification Method	Antigen Affinity Purified
Isotype	IgG
Clonality	Polyclonal
Alias	Sulfide:quinone oxidoreductase, mitochondrial (SQOR) (EC 1.8.5.-) (Sulfide dehydrogenase-like) (Sulfide quinone oxidoreductase), SQOR, SQRDL
Immunogen Species	Homo sapiens (Human)
Research Area	Signal Transduction
Target Names	SQOR

Image



Western blot

All lanes: SQRDL antibody at 4.67µg/ml

Lane 1: A549 whole cell lysate

Lane 2: A431 whole cell lysate

Lane 3: HeLa whole cell lysate

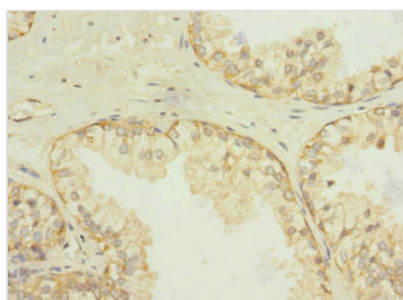
Lane 4: HepG2 whole cell lysate

Secondary

Goat polyclonal to rabbit IgG at 1/10000 dilution

Predicted band size: 50 kDa

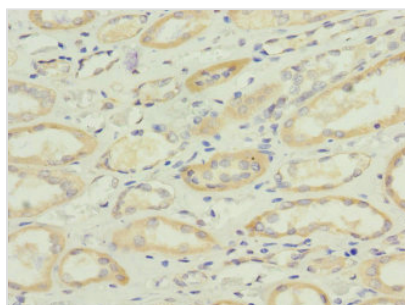
Observed band size: 50 kDa



Immunohistochemistry of paraffin-embedded

human prostate cancer using CSB-

PA022646ESR2HU at dilution of 1:100



Immunohistochemistry of paraffin-embedded human kidney tissue using CSB-PA022646ESR2HU at dilution of 1:100

Usage

For Research Use Only. Not for use in diagnostic or therapeutic procedures.