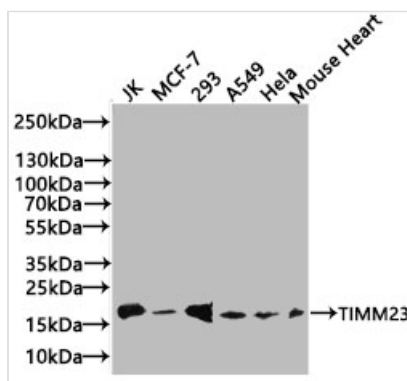




TIMM23 Antibody

Product Code	CSB-PA023553ESR2HU
Storage	Upon receipt, store at -20°C or -80°C. Avoid repeated freeze.
Uniprot No.	O14925
Immunogen	Recombinant Human Mitochondrial import inner membrane translocase subunit Tim23 protein (1-209AA)
Raised In	Rabbit
Species Reactivity	Human, Mouse
Tested Applications	ELISA, WB, IF; Recommended dilution: WB:1:1000-1:5000, IF:1:20-1:200
Form	Liquid
Conjugate	Non-conjugated
Storage Buffer	Preservative: 0.03% Proclin 300 Constituents: 50% Glycerol, 0.01M PBS, PH 7.4
Purification Method	Antigen Affinity Purified
Isotype	IgG
Clonality	Polyclonal
Product Type	Polyclonal Antibody
Immunogen Species	Homo sapiens (Human)
Research Area	Tags & Cell Markers
Target Names	TIMM23

Image



Western Blot

Positive WB detected in: JK whole cell lysate(20µg), MCF-7 whole cell lysate(20µg), 293 whole cell lysate(20µg), A549 whole cell lysate(20µg), HeLa whole cell lysate(20µg), Mouse Heart tissue lysate(20µg)

All lanes: TIMM23 antibody at 1:1000

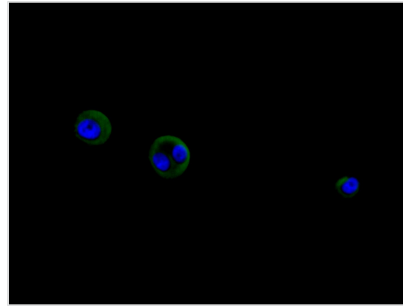
Secondary

Goat polyclonal to rabbit IgG at 1/50000 dilution

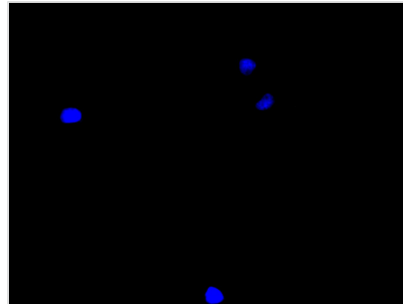
Predicted band size: 22 kDa

Observed band size: 22 kDa

Exposure time: 300s



Immunofluorescence staining of A549 cell with CSB-PA023553ESR2HU at 1:50, counter-stained with DAPI. The cells were fixed in 4% formaldehyde and permeated by 0.2% TritonX-100 for 15 min. Then 10% normal goat serum to block non-specific protein-protein interactions. The cells were then incubated with the antibody overnight at 4°C. The secondary antibody was Alexa Fluor 488-conjugated AffiniPure Goat Anti-Rabbit IgG(H+L).



Immunofluorescence staining of A549 cell with 5% goat serum, counter-stained with DAPI. The cells were fixed in 4% formaldehyde and blocked in 10% normal Goat Serum. The cells were then incubated with the antibody overnight at 4°C. The secondary antibody was Alexa Fluor 488-conjugated AffiniPure Goat Anti-Rabbit IgG(H+L).

Usage

For Research Use Only. Not for use in diagnostic or therapeutic procedures.