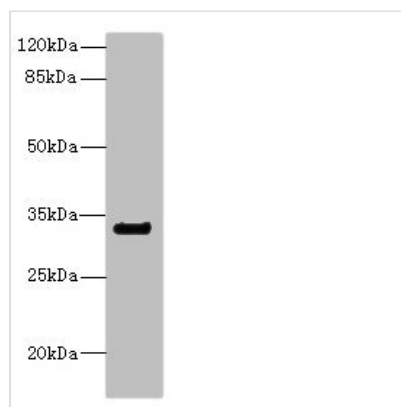




CD300A Antibody

Product Code	CSB-PA887023ESR1HU
Storage	Upon receipt, store at -20°C or -80°C. Avoid repeated freeze.
Uniprot No.	Q9UGN4
Immunogen	Recombinant Human CMRF35-like molecule 8 protein (18-180AA)
Raised In	Rabbit
Species Reactivity	Human, Mouse
Tested Applications	ELISA, WB, IHC; Recommended dilution: WB:1:1000-1:5000, IHC:1:20-1:200
Form	Liquid
Conjugate	Non-conjugated
Storage Buffer	PBS with 0.02% sodium azide, 50% glycerol, pH7.3.
Purification Method	Antigen Affinity Purified
Isotype	IgG
Clonality	Polyclonal
Alias	CMRF35-like molecule 8 (CLM-8) (CD300 antigen-like family member A) (CMRF-35-H9) (CMRF35-H9) (CMRF35-H) (IRC1/IRC2) (Immunoglobulin superfamily member 12) (IgSF12) (Inhibitory receptor protein 60) (IRp60) (NK inhibitory receptor) (CD antigen CD300a), CD300A, CMRF35H IGSF12
Immunogen Species	Homo sapiens (Human)
Research Area	Immunology
Target Names	CD300A

Image



Western blot

All lanes: CNTN4 antibody IgG at 2.22μg/ml +

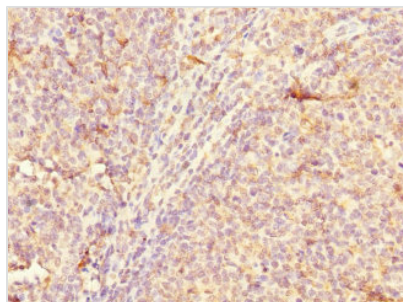
Mouse kidney tissue

Secondary

Goat polyclonal to rabbit IgG at 1/10000 dilution

Predicted band size: 34, 21, 12, 17 kDa

Observed band size: 34 kDa



Immunohistochemistry of paraffin-embedded human tonsil tissue using CSB-PA887023ESR1HU at dilution of 1:100