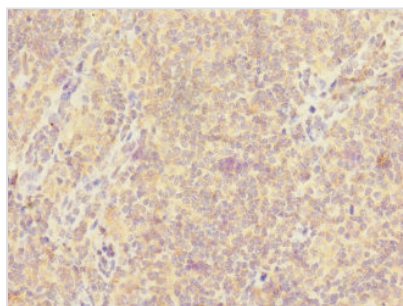




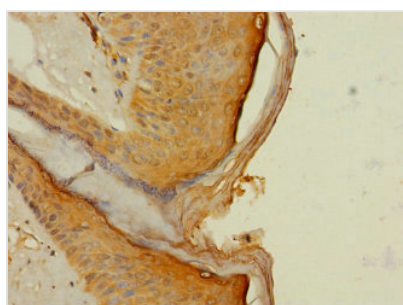
# CD300A Antibody

<b>Product Code</b>	CSB-PA887023ESR2HU
<b>Storage</b>	Upon receipt, store at -20°C or -80°C. Avoid repeated freeze.
<b>Uniprot No.</b>	Q9UGN4
<b>Immunogen</b>	Recombinant Human CMRF35-like molecule 8 protein (18-180AA)
<b>Raised In</b>	Rabbit
<b>Species Reactivity</b>	Human
<b>Tested Applications</b>	ELISA, IHC; Recommended dilution: IHC:1:20-1:200
<b>Form</b>	Liquid
<b>Conjugate</b>	Non-conjugated
<b>Storage Buffer</b>	PBS with 0.02% sodium azide, 50% glycerol, pH7.3.
<b>Purification Method</b>	Antigen Affinity Purified
<b>Isotype</b>	IgG
<b>Clonality</b>	Polyclonal
<b>Alias</b>	CMRF35-like molecule 8 (CLM-8) (CD300 antigen-like family member A) (CMRF-35-H9) (CMRF35-H9) (CMRF35-H) (IRC1/IRC2) (Immunoglobulin superfamily member 12) (IgSF12) (Inhibitory receptor protein 60) (IRp60) (NK inhibitory receptor) (CD antigen CD300a), CD300A, CMRF35H IGSF12
<b>Immunogen Species</b>	Homo sapiens (Human)
<b>Research Area</b>	Immunology
<b>Target Names</b>	CD300A

## Image



Immunohistochemistry of paraffin-embedded human tonsil tissue using CSB-PA887023ESR2HU at dilution of 1:100



Immunohistochemistry of paraffin-embedded human skin tissue using CSB-PA887023ESR2HU at dilution of 1:100