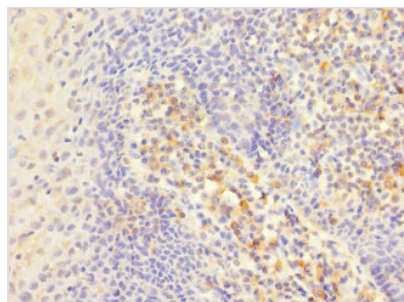




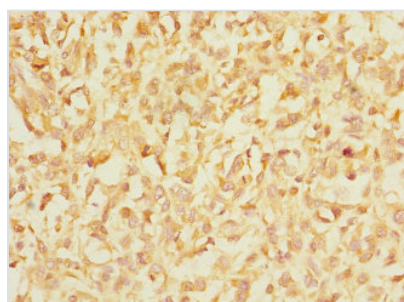
ITGAE Antibody

Product Code	CSB-PA011874ESR1HU
Storage	Upon receipt, store at -20°C or -80°C. Avoid repeated freeze.
Uniprot No.	P38570
Immunogen	Recombinant Human Integrin alpha-E protein (19-200AA)
Raised In	Rabbit
Species Reactivity	Human
Tested Applications	ELISA, IHC; Recommended dilution: IHC:1:20-1:200
Form	Liquid
Conjugate	Non-conjugated
Storage Buffer	PBS with 0.02% sodium azide, 50% glycerol, pH7.3.
Purification Method	Antigen Affinity Purified
Isotype	IgG
Clonality	Polyclonal
Alias	Integrin alpha-E (HML-1 antigen) (Integrin alpha-IEL) (Mucosal lymphocyte 1 antigen) (CD antigen CD103) [Cleaved into: Integrin alpha-E light chain; Integrin alpha-E heavy chain], ITGAE
Immunogen Species	Homo sapiens (Human)
Research Area	Signal Transduction
Target Names	ITGAE

Image



Immunohistochemistry of paraffin-embedded human tonsil tissue using CSB-PA011874ESR1HU at dilution of 1:100



Immunohistochemistry of paraffin-embedded human melanoma using CSB-PA011874ESR1HU at dilution of 1:100



Usage

For Research Use Only. Not for use in diagnostic or therapeutic procedures.