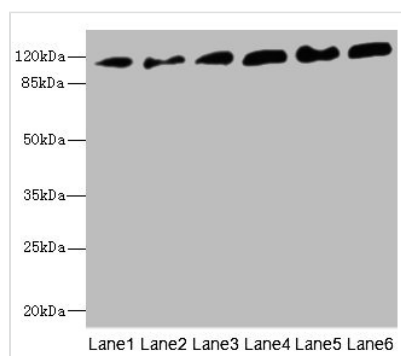




PCDH1 Antibody

Product Code	CSB-PA2106ESR2HU
Storage	Upon receipt, store at -20°C or -80°C. Avoid repeated freeze.
Uniprot No.	Q08174
Immunogen	Recombinant Human Protocadherin-1 protein (60-220AA)
Raised In	Rabbit
Species Reactivity	Human, Mouse
Tested Applications	ELISA, WB, IHC; Recommended dilution: WB:1:1000-1:5000, IHC:1:20-1:200
Form	Liquid
Conjugate	Non-conjugated
Storage Buffer	PBS with 0.02% sodium azide, 50% glycerol, pH7.3.
Purification Method	Antigen Affinity Purified
Isotype	IgG
Clonality	Polyclonal
Alias	Protocadherin-1 (Cadherin-like protein 1) (Protocadherin-42) (PC42), PCDH1
Immunogen Species	Homo sapiens (Human)
Research Area	Neuroscience
Target Names	PCDH1

Image



Western blot

All lanes: PCDH1 antibody at 2.56µg/ml

Lane 1: A431 whole cell lysate

Lane 2: Human breast cancer cell

Lane 3: Jurkat whole cell lysate

Lane 4: HeLa whole cell lysate

Lane 5: NIH/3T3 whole cell lysate

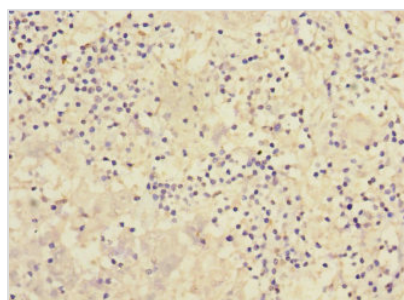
Lane 6: 293T whole cell lysate

Secondary

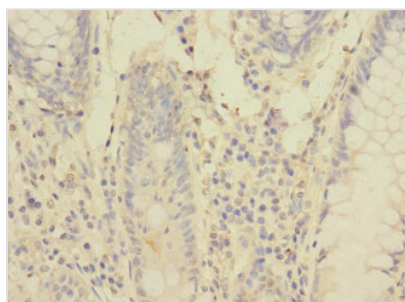
Goat polyclonal to rabbit IgG at 1/10000 dilution

Predicted band size: 115, 134 kDa

Observed band size: 115 kDa



Immunohistochemistry of paraffin-embedded human liver cancer using CSB-PA2106ESR2HU at dilution of 1:100



Immunohistochemistry of paraffin-embedded human colon cancer using CSB-PA2106ESR2HU at dilution of 1:100

Usage

For Research Use Only. Not for use in diagnostic or therapeutic procedures.