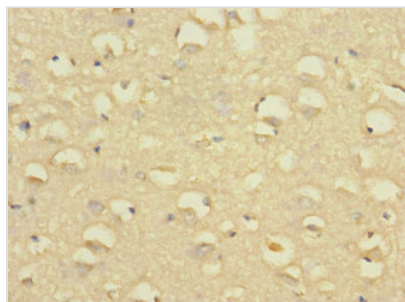




SLC24A1 Antibody

Product Code	CSB-PA021469ESR1HU
Storage	Upon receipt, store at -20°C or -80°C. Avoid repeated freeze.
Uniprot No.	O60721
Immunogen	Recombinant Human Sodium/potassium/calcium exchanger 1 protein (330-452AA)
Raised In	Rabbit
Species Reactivity	Human
Tested Applications	ELISA, IHC; Recommended dilution: IHC:1:20-1:200
Form	Liquid
Conjugate	Non-conjugated
Storage Buffer	PBS with 0.02% sodium azide, 50% glycerol, pH7.3.
Purification Method	Antigen Affinity Purified
Isotype	IgG
Clonality	Polyclonal
Alias	Sodium/potassium/calcium exchanger 1 (Na(+)/K(+)/Ca(2+)-exchange protein 1) (Retinal rod Na-Ca+K exchanger) (Solute carrier family 24 member 1), SLC24A1, KIAA0702 NCKX1
Immunogen Species	Homo sapiens (Human)
Research Area	Signal Transduction
Target Names	SLC24A1

Image



Immunohistochemistry of paraffin-embedded human brain tissue using CSB-PA021469ESR1HU at dilution of 1:100

Usage

For Research Use Only. Not for use in diagnostic or therapeutic procedures.